



Macro Ops

The Trifecta Report

The best trades are the ones in which you have all three things going for you: fundamentals, technical, and market tone. ~ Michael Marcus

Weekly Summary



S&P 500

➤ **Summary:** We have a sell-signal on the weekly N&N, the TL score is still at -5, breadth and credit are not yet confirming this bullish rebound and are showing increasing bearish divergences. However, seasonality, momentum, and performance chasing will probably drive the market higher over the short-term. Watch AAPL and MSFT which combined account for over 13% of the S&P. Both are in parabolic uptrends.

UST 10yr Bonds

➤ **Summary:** The MO yield indicator continues to trend lower, indicating lower yields (higher bonds). If the Fed sticks to its increasingly hawkish rhetoric at this week's meeting, then we should expect the long end to perform well and the curve to continue to flatten.

Gold

➤ **Summary:** Gold is back in its sideways neutral range after a false breakout. A sustainable bullish impulse won't happen until we see the USD roll back over into a bear trend.

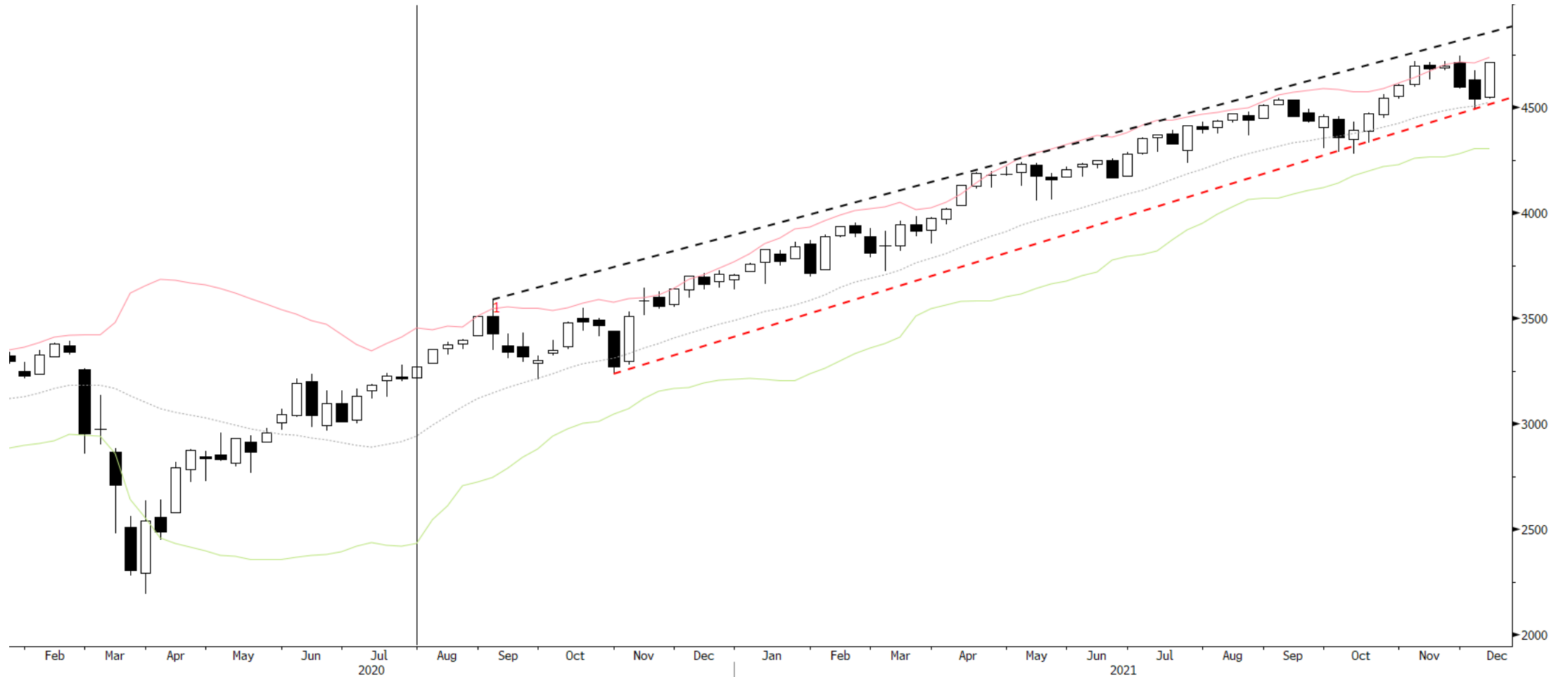
EURUSD

➤ **Summary:** EURUSD has hit our measured move target and is so far holding significant support. It's also deeply oversold over the short-term. Net spec positioning has flipped bearish for the first time in nearly 2-years. Relative growth forecasts and economic surprises have turned up in favor of the euro, recently. And long end yield momentum has flipped positive. EURUSD may trade sideways for a while and test its recent low but expect the pair to see bullish reversion over the next few months.

S&P 500 Monthly



S&P 500 Weekly



SPX Index (S&P 500 INDEX) SPX CHART-WEEKLY Weekly 24JAN2020-11DEC2021

Copyright© 2021 Bloomberg Finance L.P.

12-Dec-2021 18:02:51

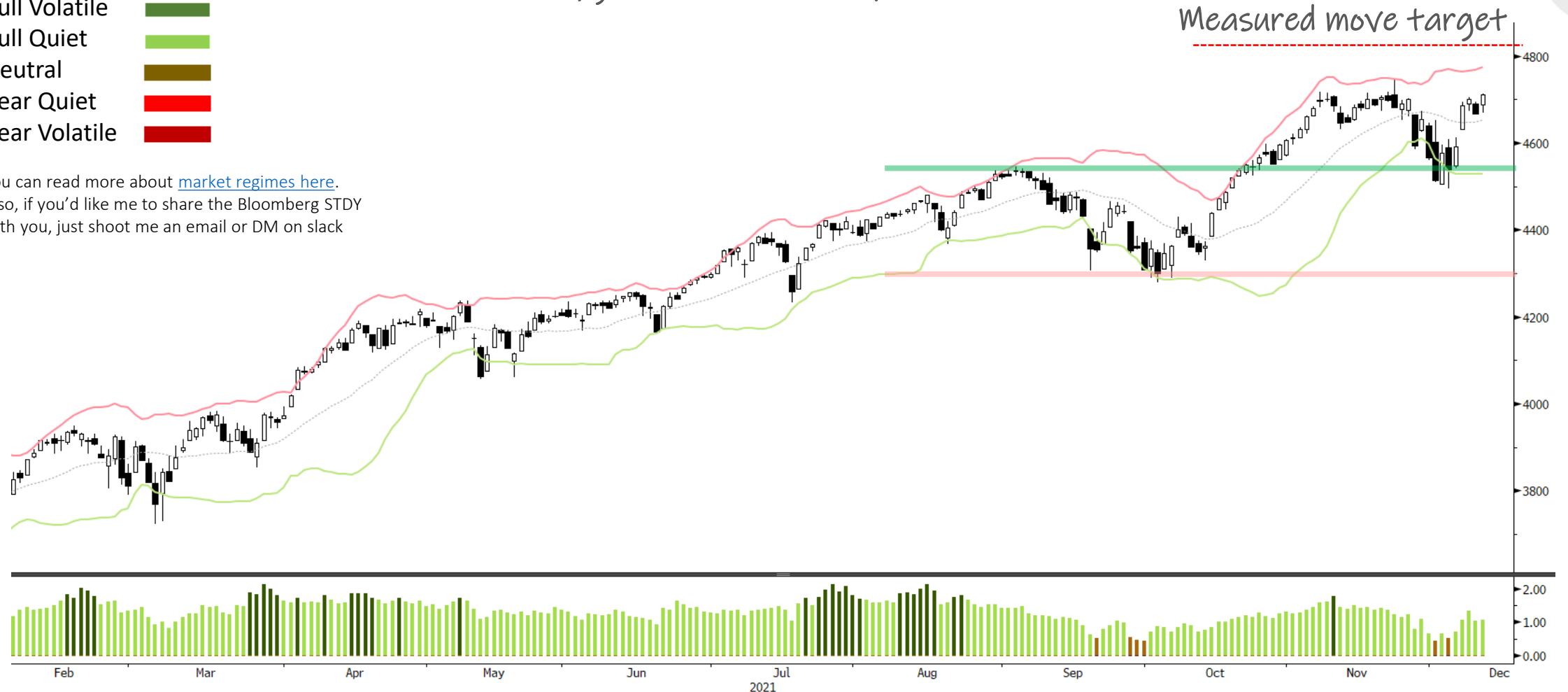
S&P 500 Daily

SQN Market Regime

- Bull Volatile
- Bull Quiet
- Neutral
- Bear Quiet
- Bear Volatile

You can read more about [market regimes here](#).
 Also, if you'd like me to share the Bloomberg STDY with you, just shoot me an email or DM on slack

The tape continues to show resilience.
 The 4,800 measured move target will likely get taken out before year's end.

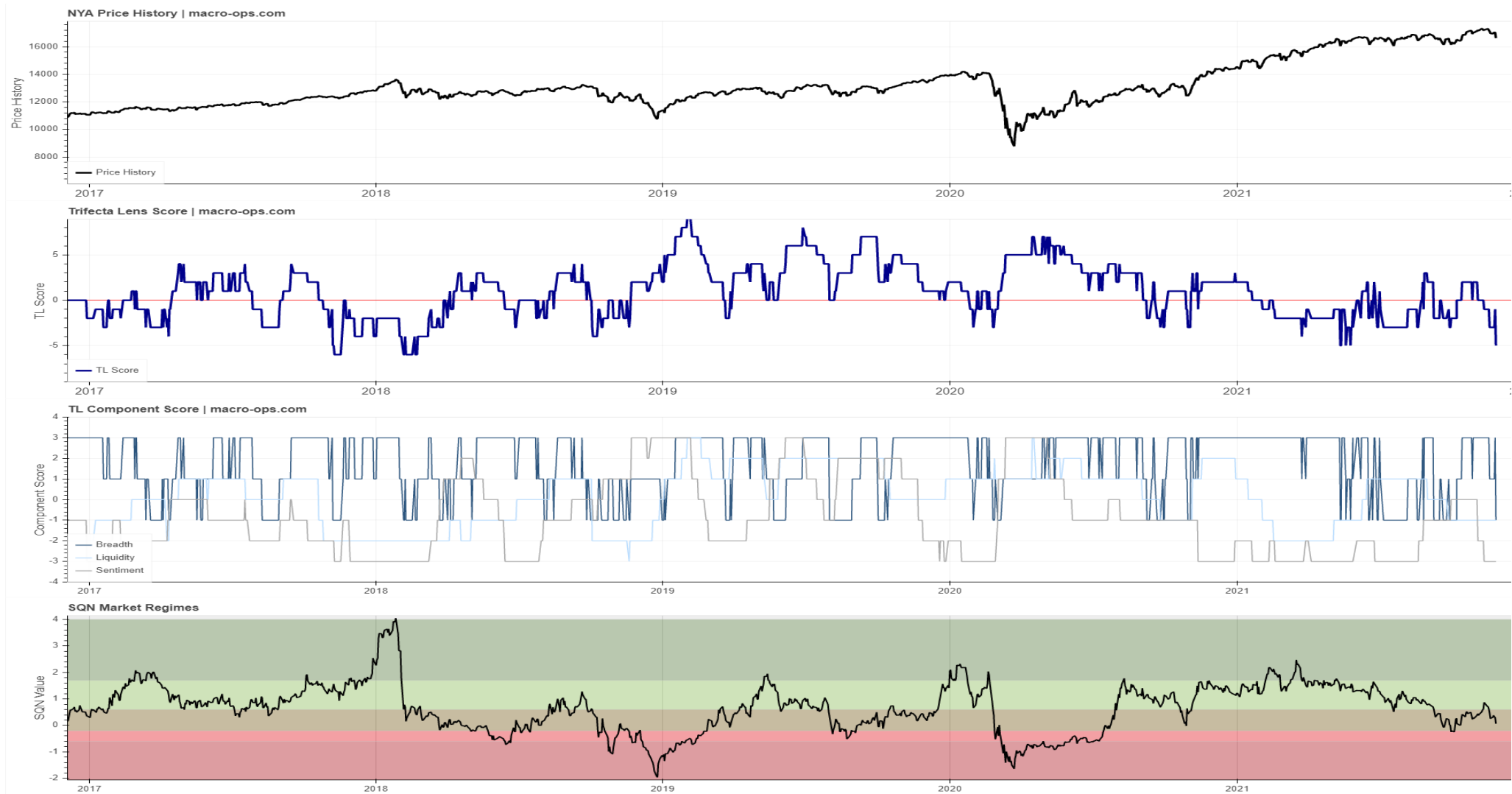


SPX Index (S&P 500 INDEX) SPX CHART-DAILY Daily 02FEB2021-13DEC2021

Copyright© 2021 Bloomberg Finance L.P.

12-Dec-2021 17:00:16

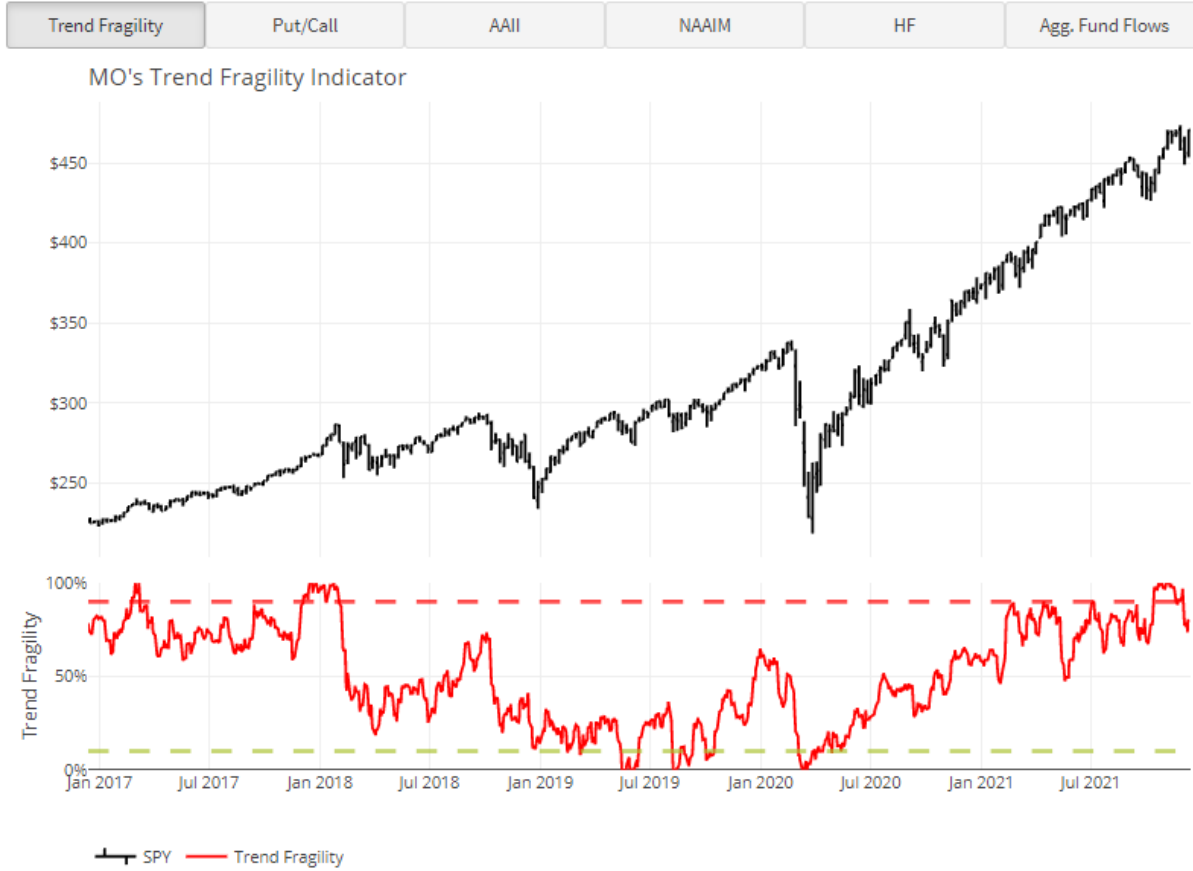
Trifecta Lens Score: **-5** (You can read more about our [Trifecta Lens here](#) and link to the [Dashboard here](#))



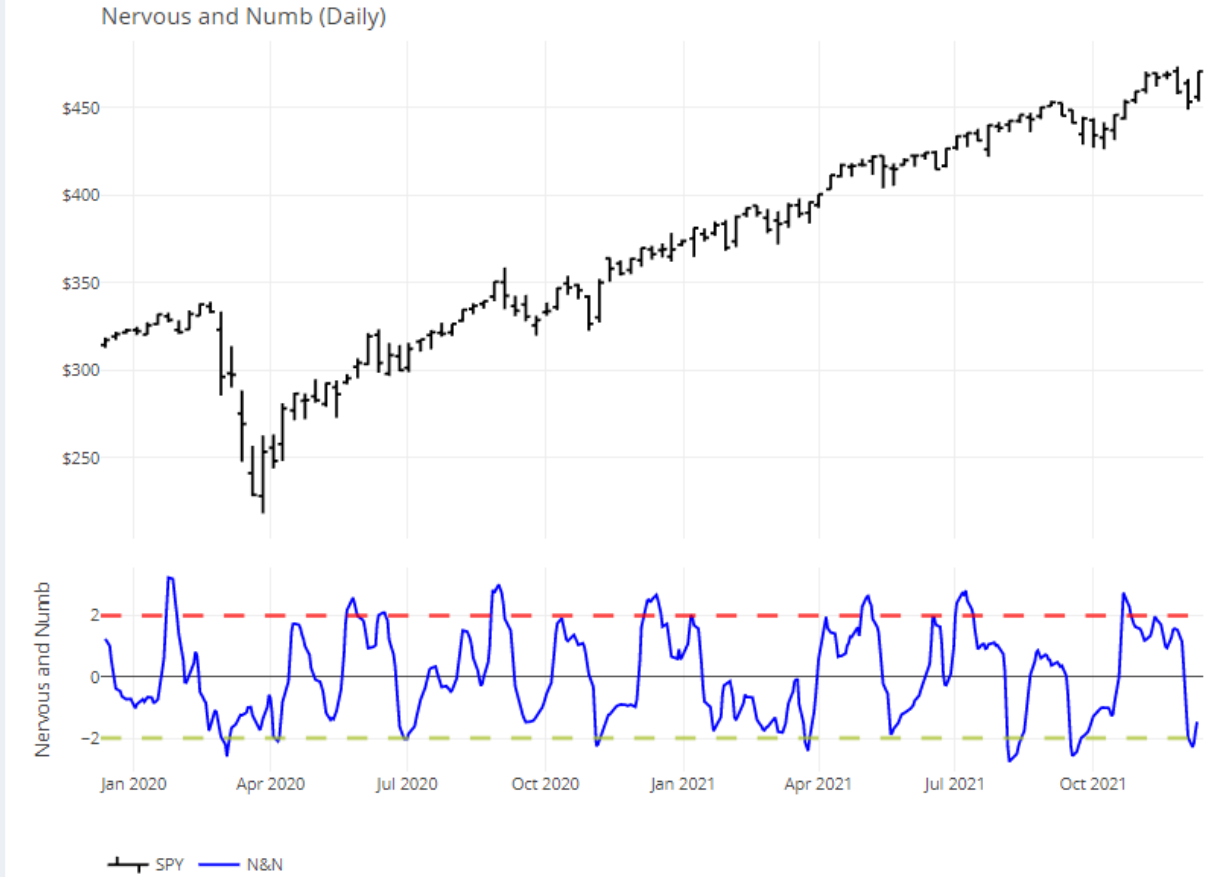
Trend Fragility and N&N: High fragility & Numb Investors (see appendix at bottom for more info)



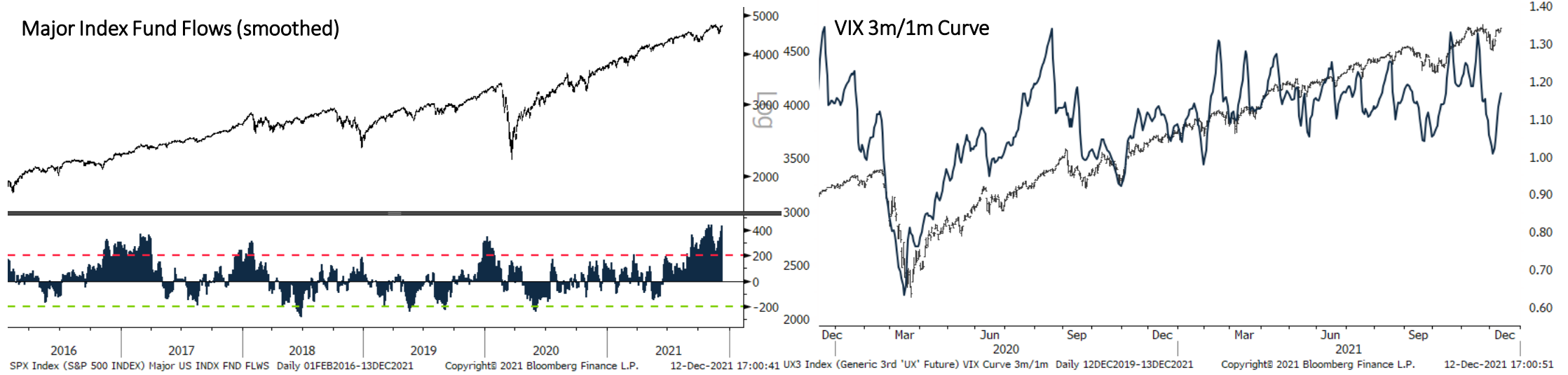
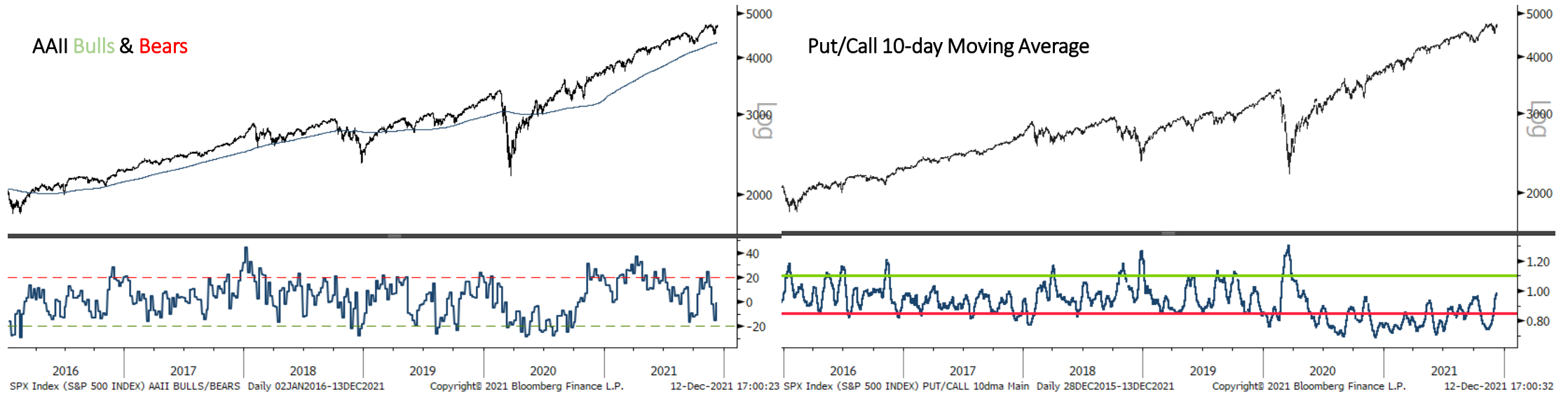
Trend Fragility



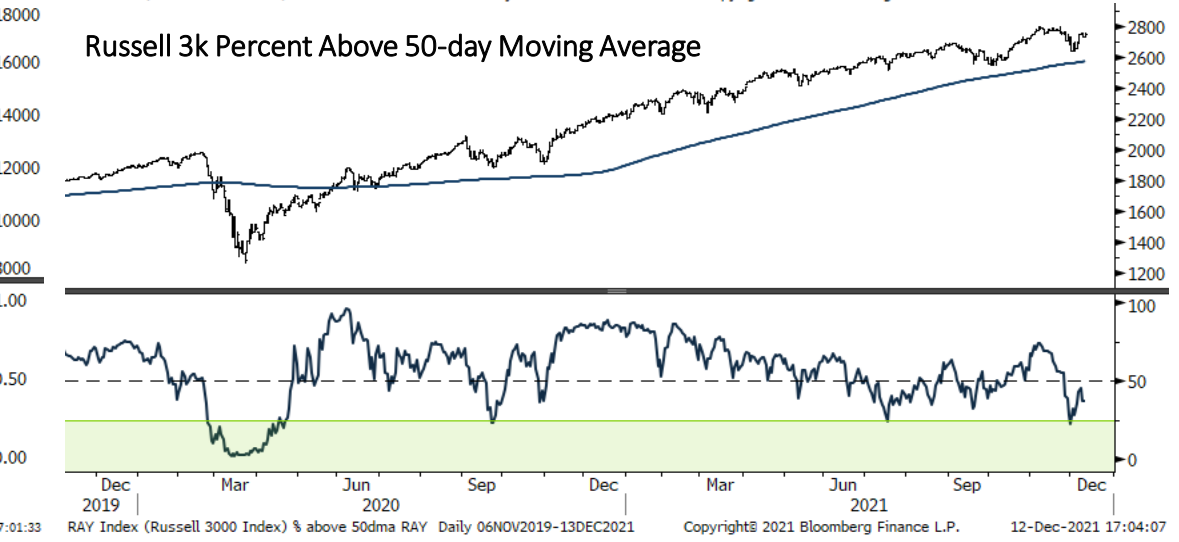
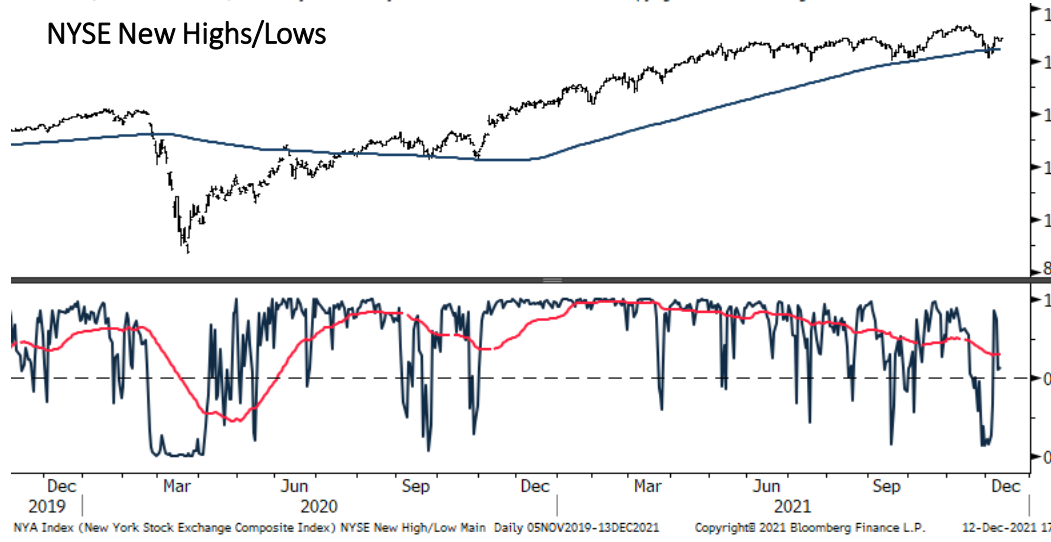
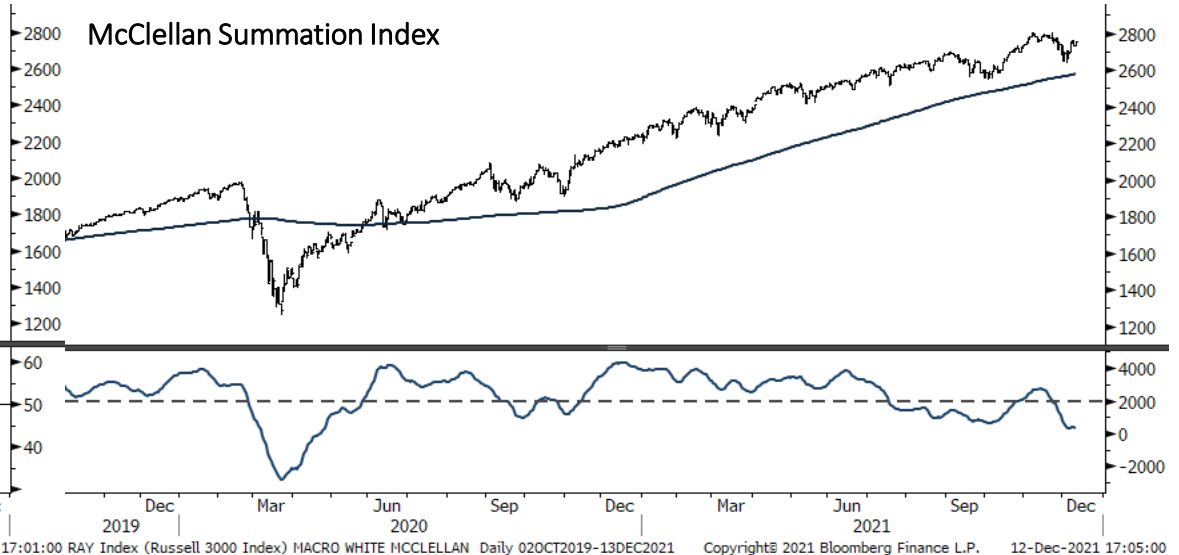
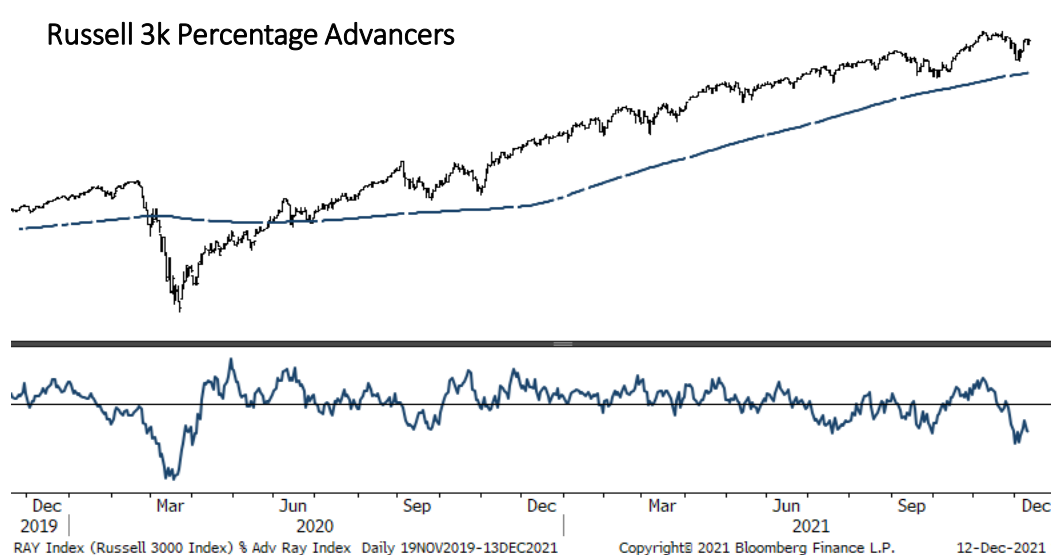
Nervous and Numb



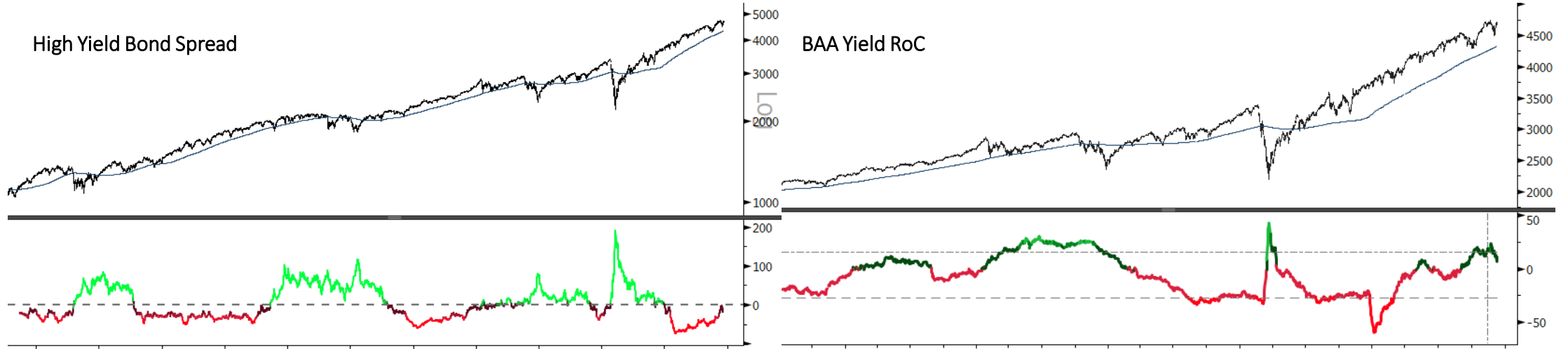
Sentiment & Positioning



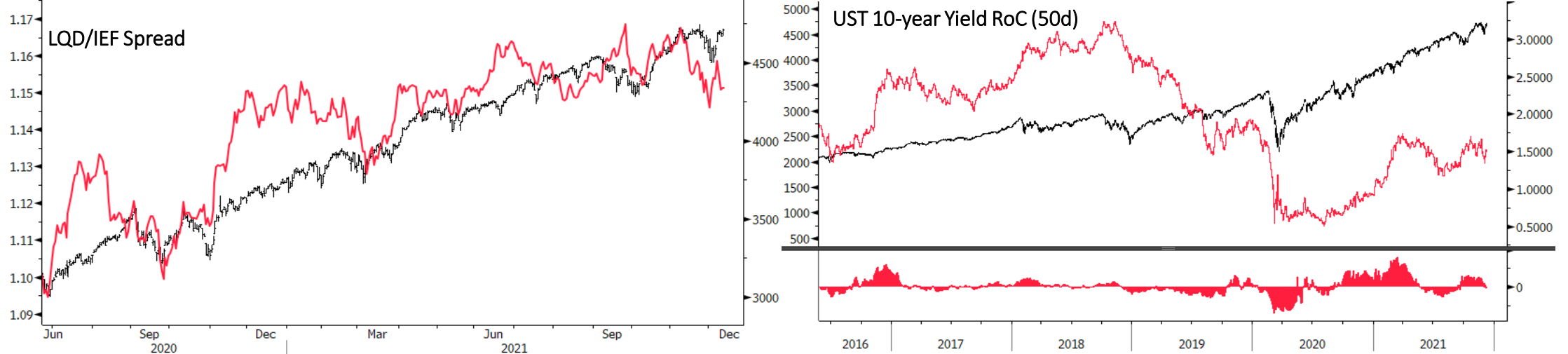
Breadth



Liquidity

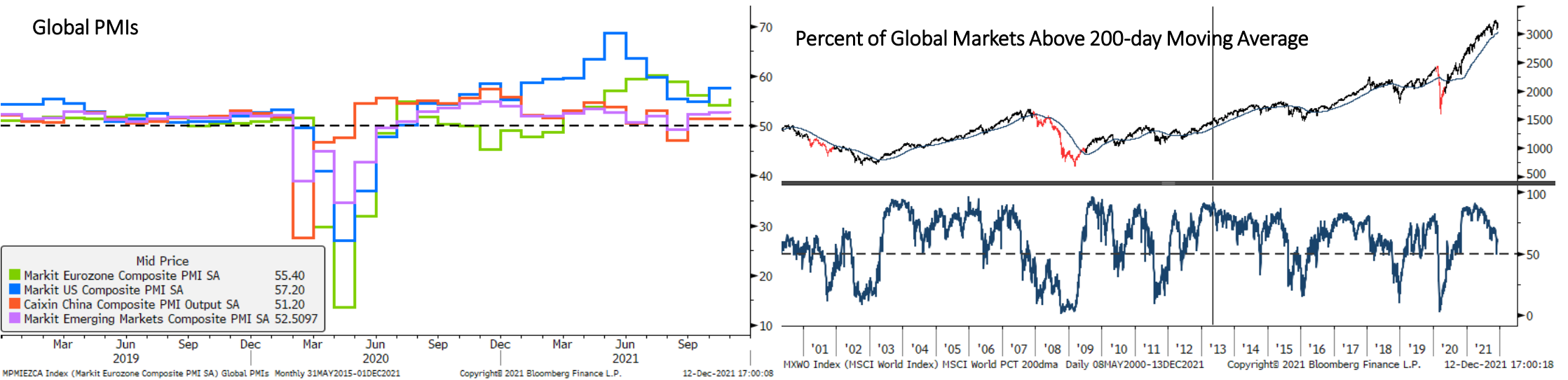
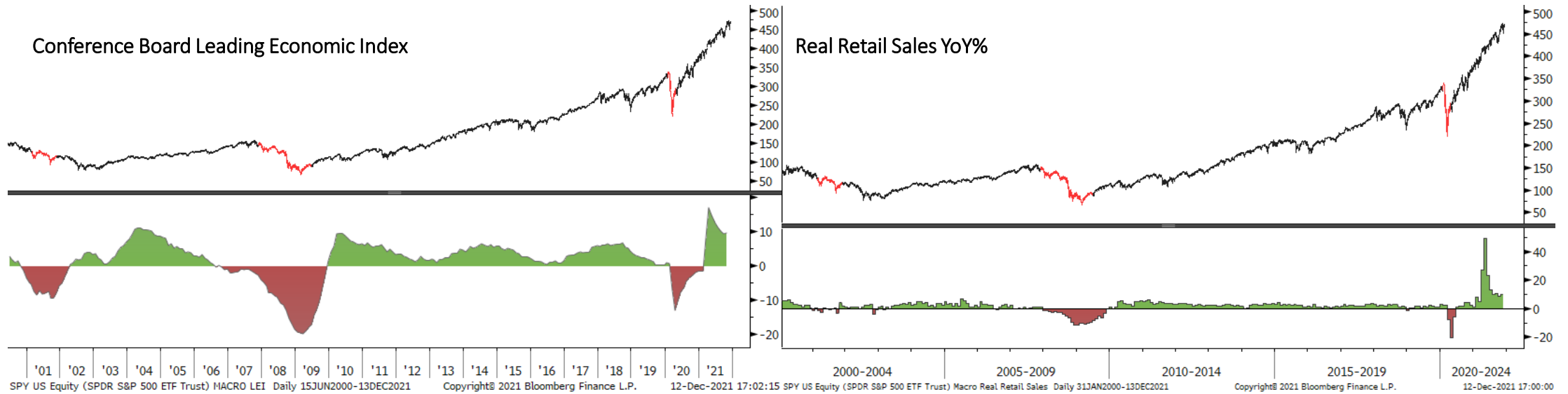


SPX Index (S&P 500 INDEX) US High Yield Spread Daily 20JUL2010-13DEC2021 Copyright© 2021 Bloomberg Finance L.P. 12-Dec-2021 17:01:42 SPX Index (S&P 500 INDEX) BAA YIELD RoC Daily 11JUL2016-13DEC2021 Copyright© 2021 Bloomberg Finance L.P. 12-Dec-2021 17:01:50



SPX Index (S&P 500 INDEX) LQD/IEF Daily 23JUN2020-13DEC2021 Copyright© 2021 Bloomberg Finance L.P. 12-Dec-2021 17:01:59 SPX Index (S&P 500 INDEX) UST 10yr RoC Daily 30MAY2016-13DEC2021 Copyright© 2021 Bloomberg Finance L.P. 12-Dec-2021 17:02:06

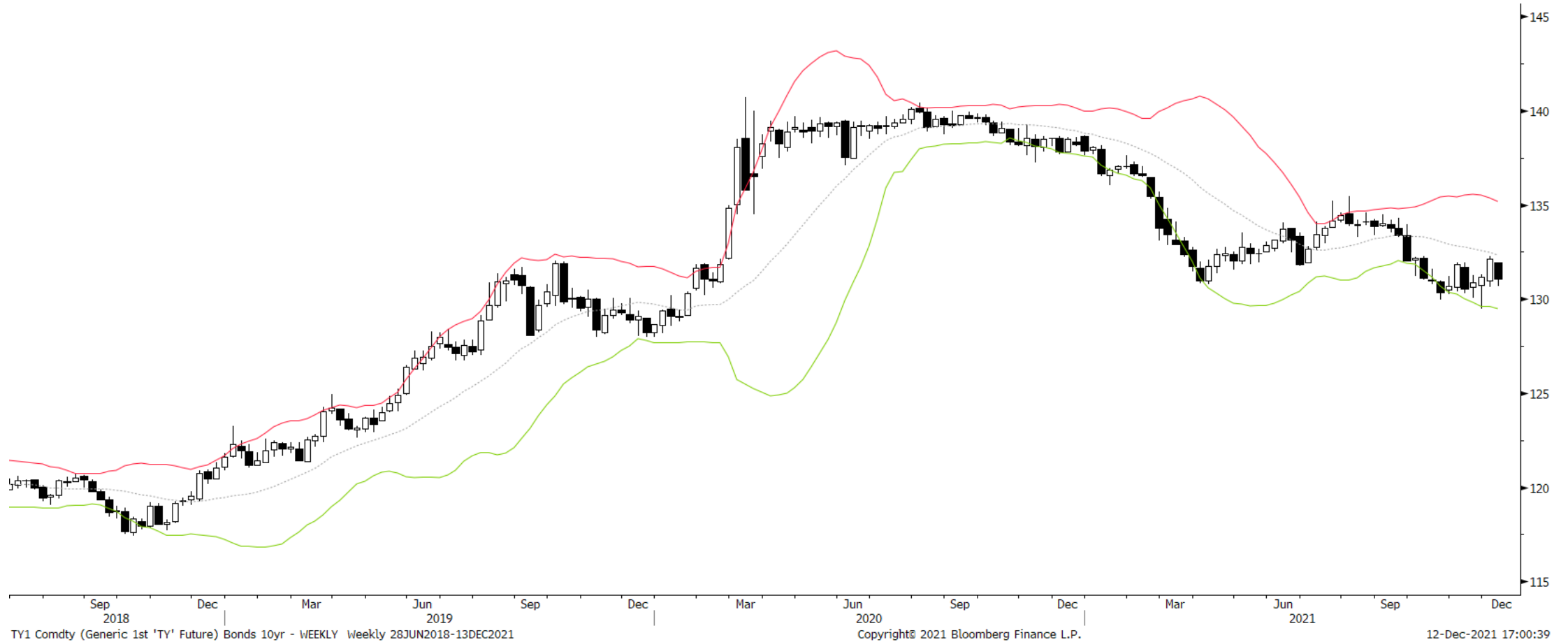
Macro



Bonds: 10-year Futures Monthly



Bonds: 10-year Futures Weekly



Bonds: 10-year Futures Daily



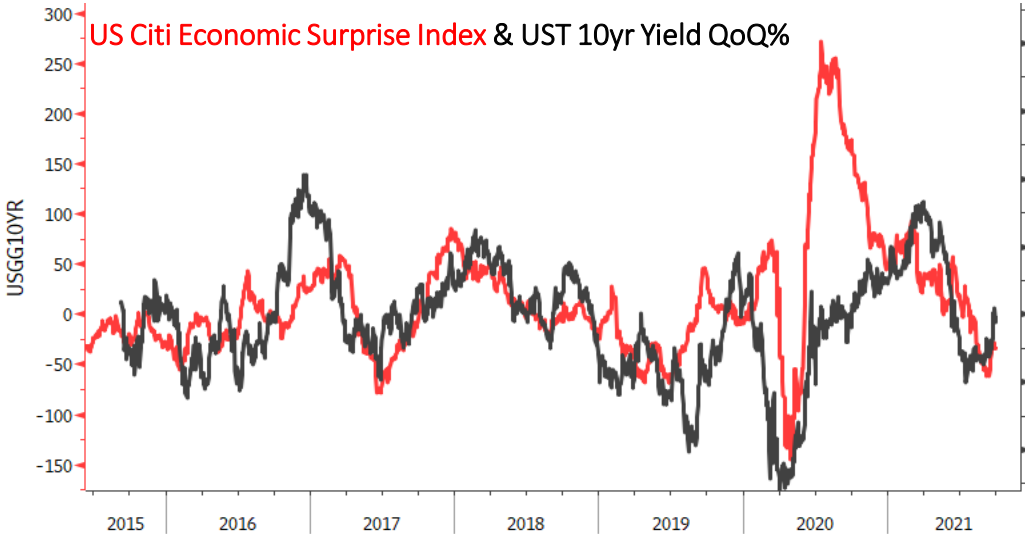
TY1 Comdty (Generic 1st 'TY' Future) Bonds 10yr - DAILY Daily 31DEC2020-13DEC2021

Copyright© 2021 Bloomberg Finance L.P.

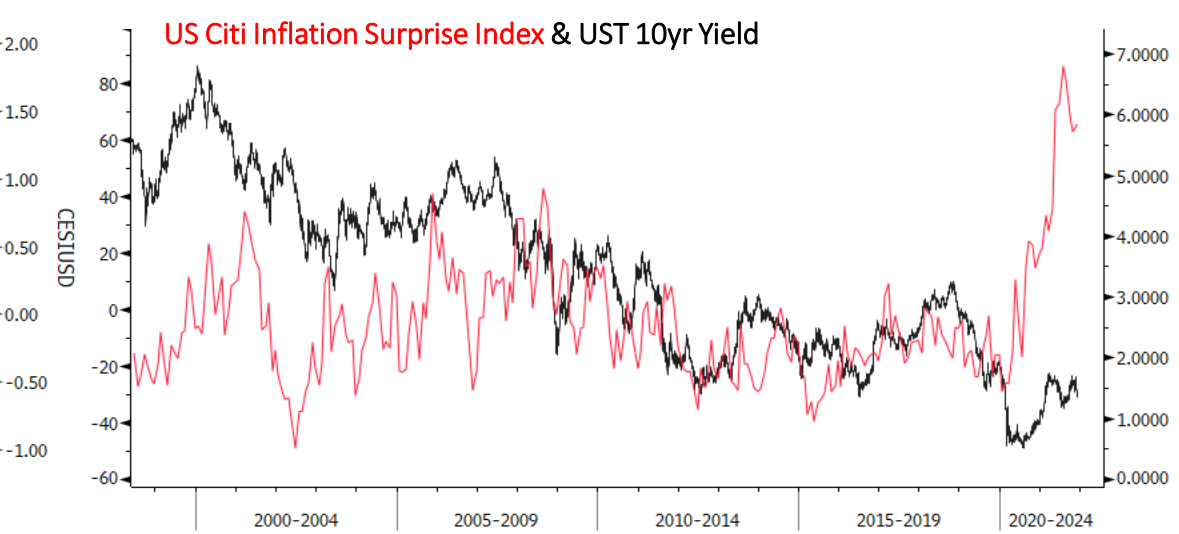
12-Dec-2021 17:00:46



Bond/Yield Indicators

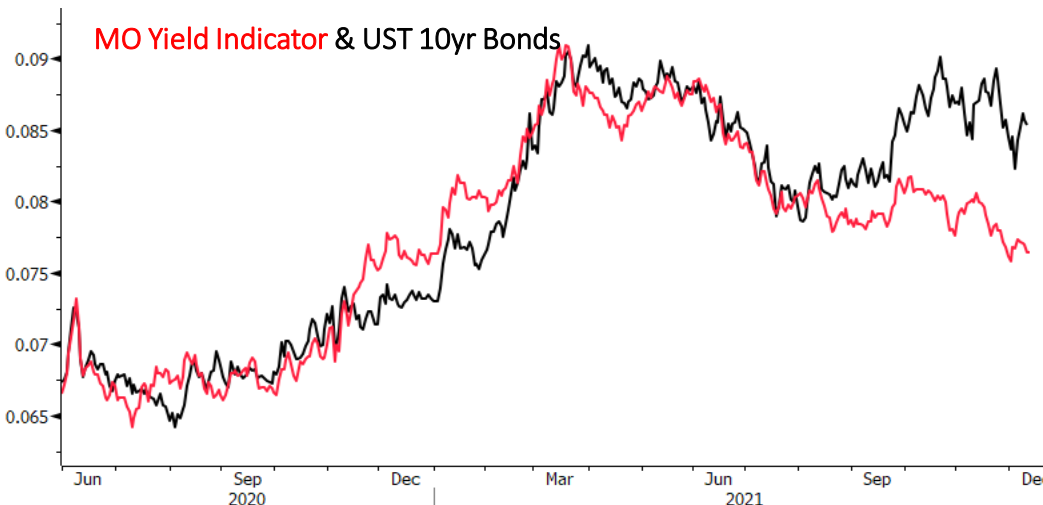


Copyright© 2021 Bloomberg Finance L.P.



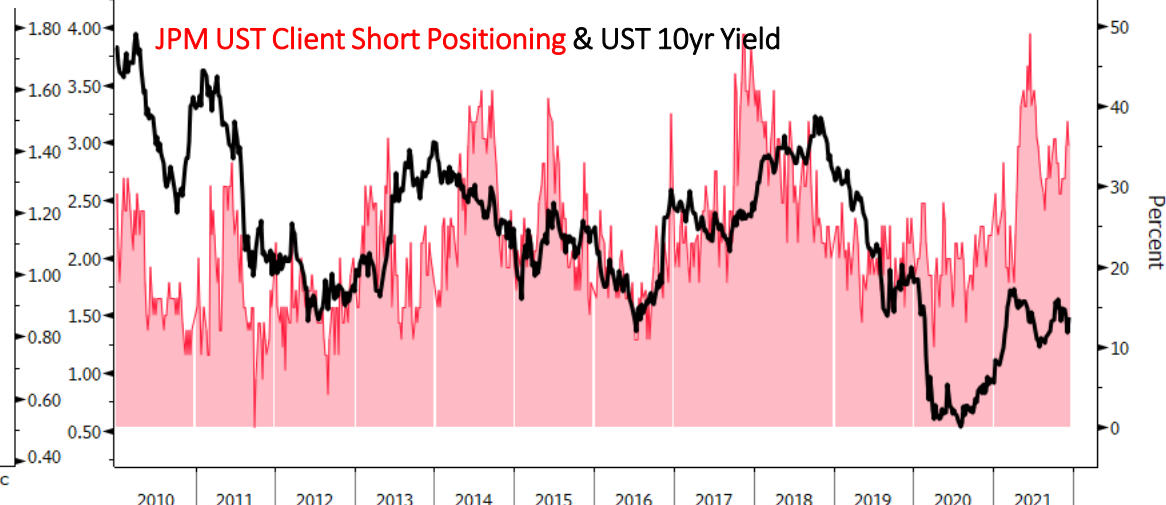
12-Dec-2021 17:00:53

USGG10YR Index (US Generic Govt 10 Yr) US CEST Inft 10yr yield Daily 02JUN1998-06DEC2021 Copyright© 2021 Bloomberg Finance L.P. 12-Dec-2021 17:01:10



GSTHUSTY Index (Interest Rate Sensitive) rate sensitive vs yield Daily 29MAY2020-13DEC2021

Copyright© 2021 Bloomberg Finance L.P.



12-Dec-2021 17:01:20 TINSALLO Index (U.S. JP Morgan Treasury Investor Sentiment All Client Short) JPM Short Bond srvy Weekly 01JAN2010-13DEC2021 Copyright© 2021 Bloomberg Finance L.P. 12-Dec-2021 17:01:00

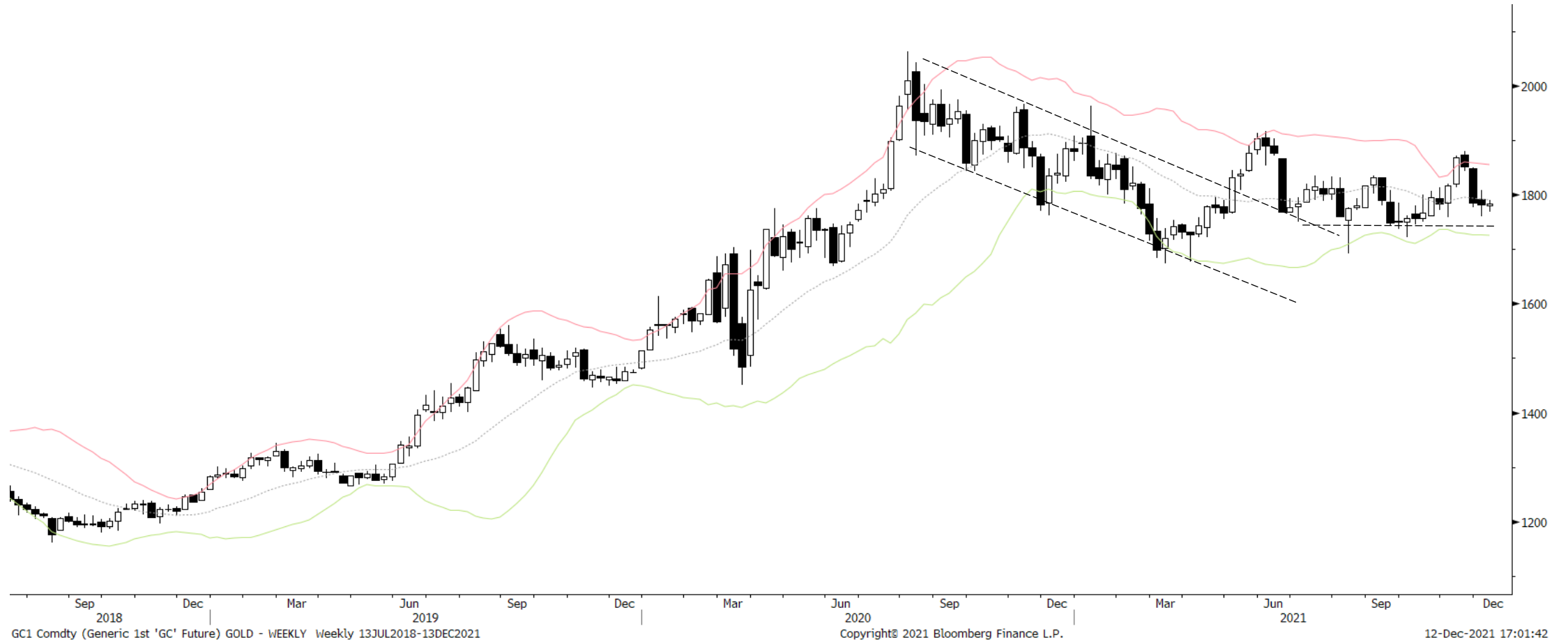
Gold Monthly



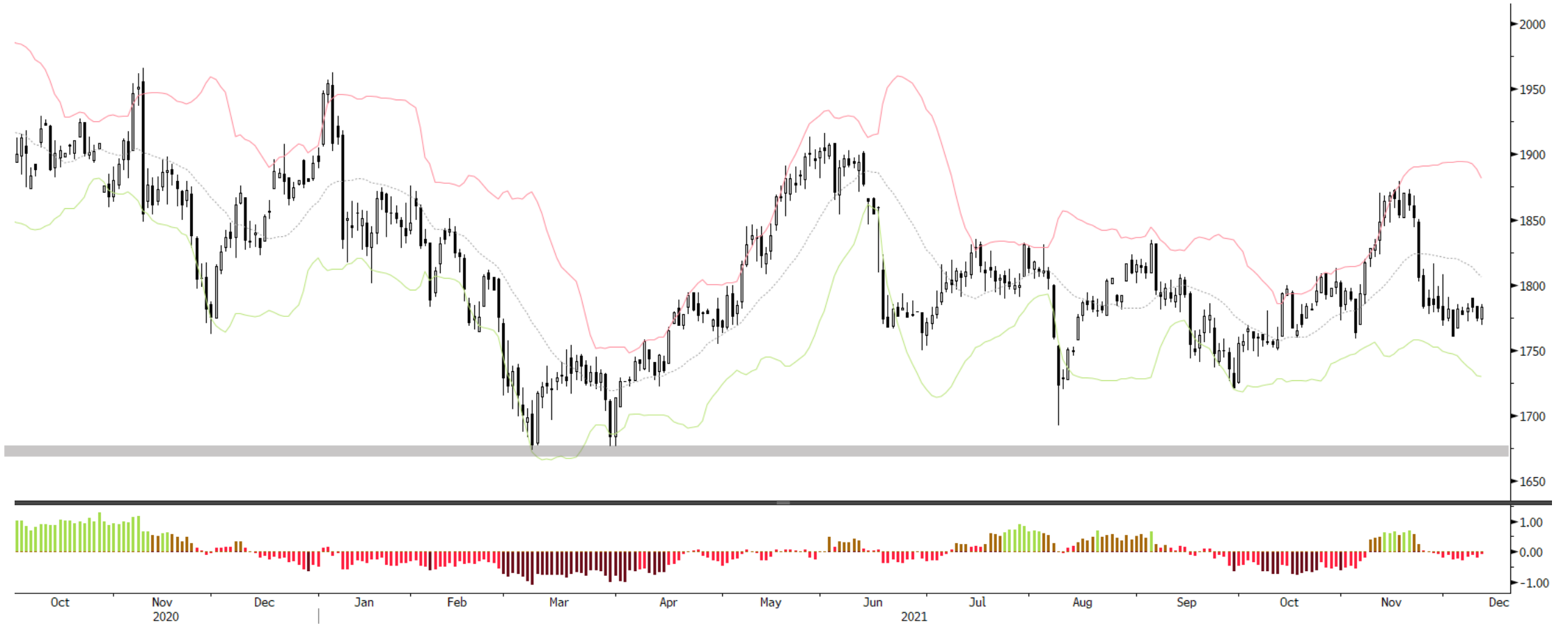
Gold is back to neutral in its longer-term trading range. Need to sit on the sidelines and watch how the chart develops...



Gold Weekly



Gold Daily



GC1 Comdty (Generic 1st 'GC' Future) GOLD - DAILY Daily 02OCT2020-13DEC2021

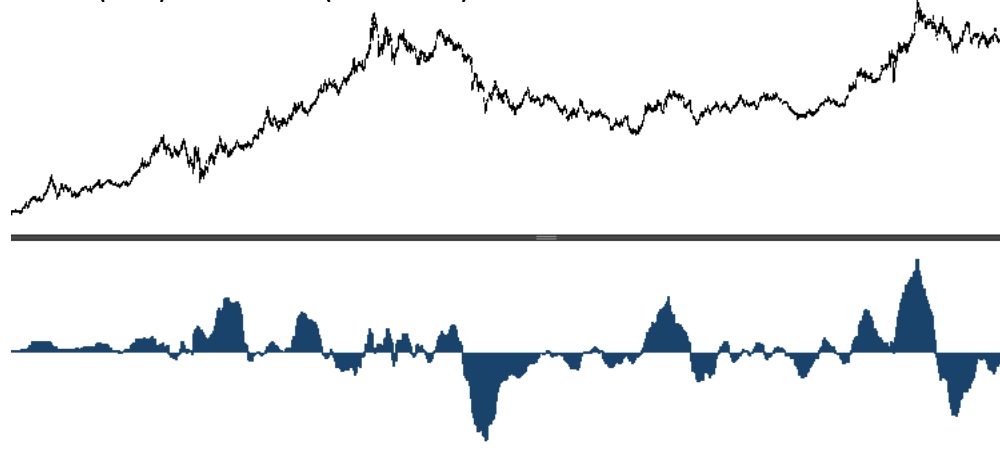
Copyright© 2021 Bloomberg Finance L.P.

12-Dec-2021 17:01:50

Gold Indicators

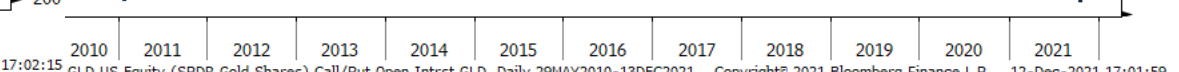
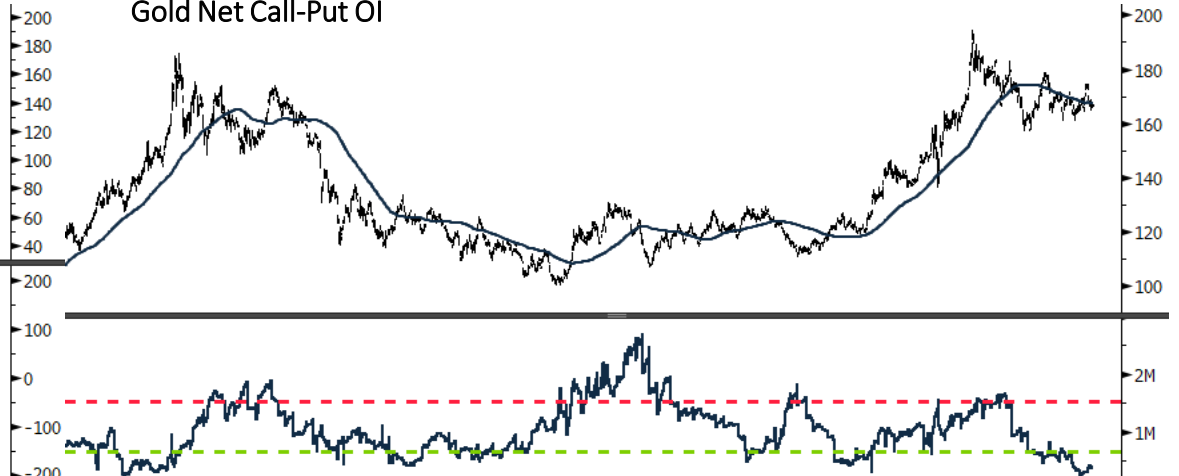


Gold (GLD) Fund Flows (smoothed)



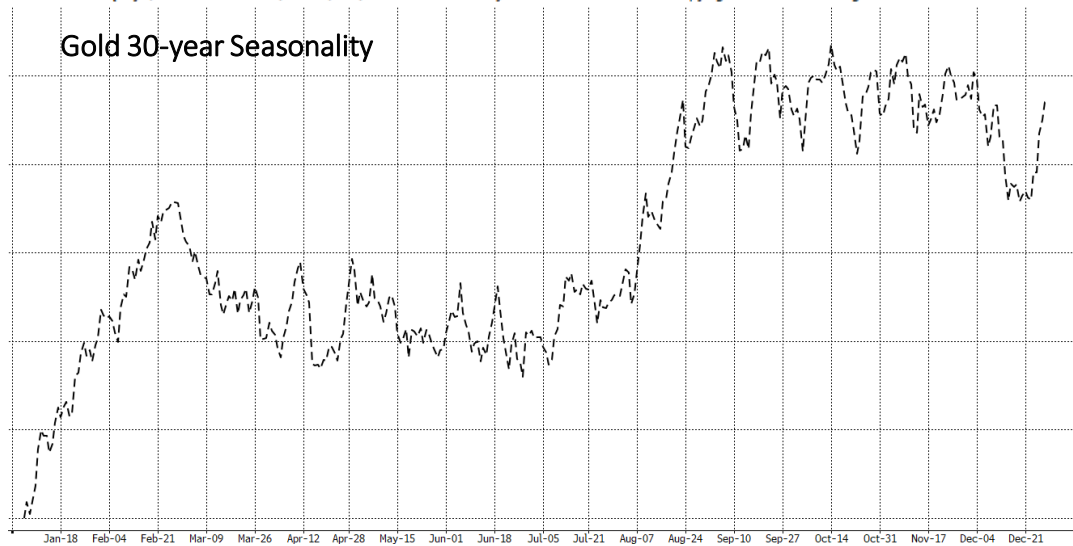
GLD US Equity (SPDR Gold Shares) Gold (GLD) Fund Flows z Daily 08SEP2005-13DEC2021 Copyright© 2021 Bloomberg Finance L.P. 12-Dec-2021 17:02:15

Gold Net Call-Put OI



GLD US Equity (SPDR Gold Shares) Call/Put Open Intrst GLD Daily 29MAY2010-13DEC2021 Copyright© 2021 Bloomberg Finance L.P. 12-Dec-2021 17:01:59

Gold 30-year Seasonality



Gold Miners % > 200-day moving average

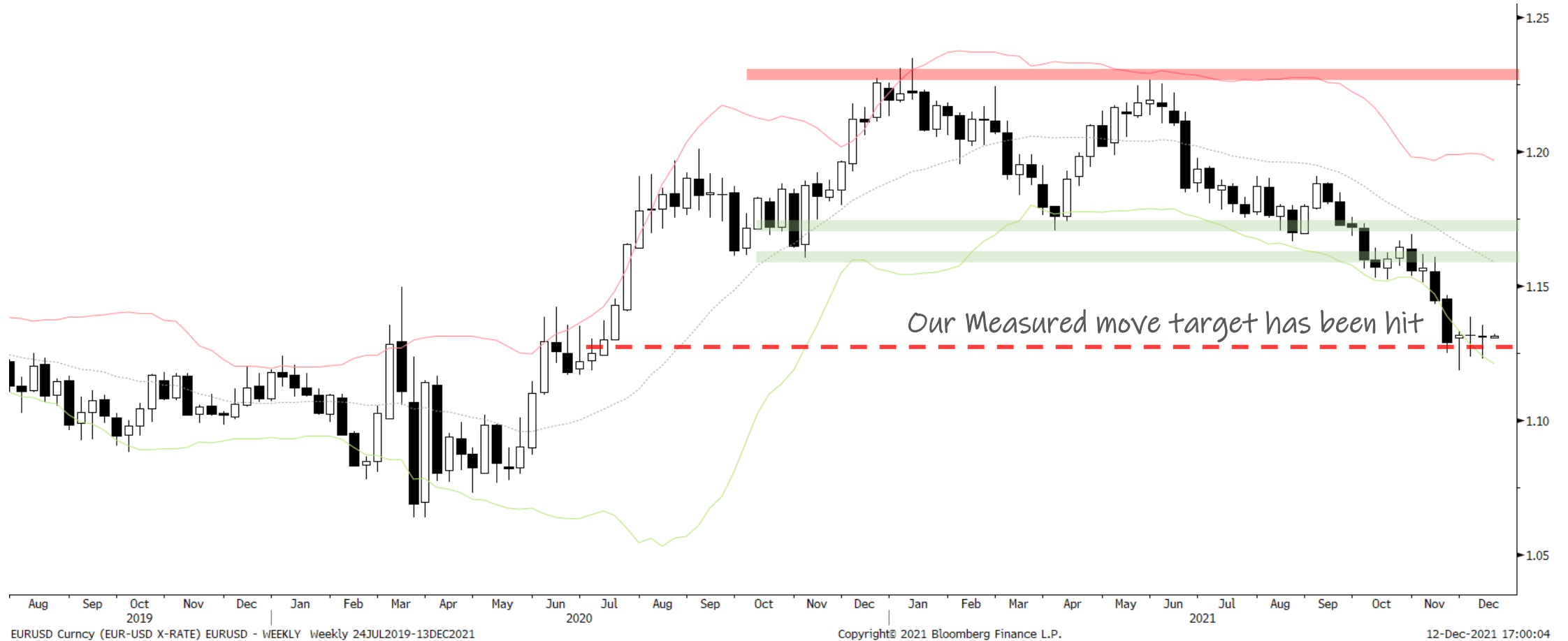


GDM Index (NYSE Arca Gold Miners Index) Breadth % abv200dma Gold Daily 05DEC2005-16AUG2021 Copyright© 2021 Bloomberg Finance L.P. 12-Dec-2021 17:02:07

EURUSD Monthly



EURUSD Weekly



EURUSD Daily



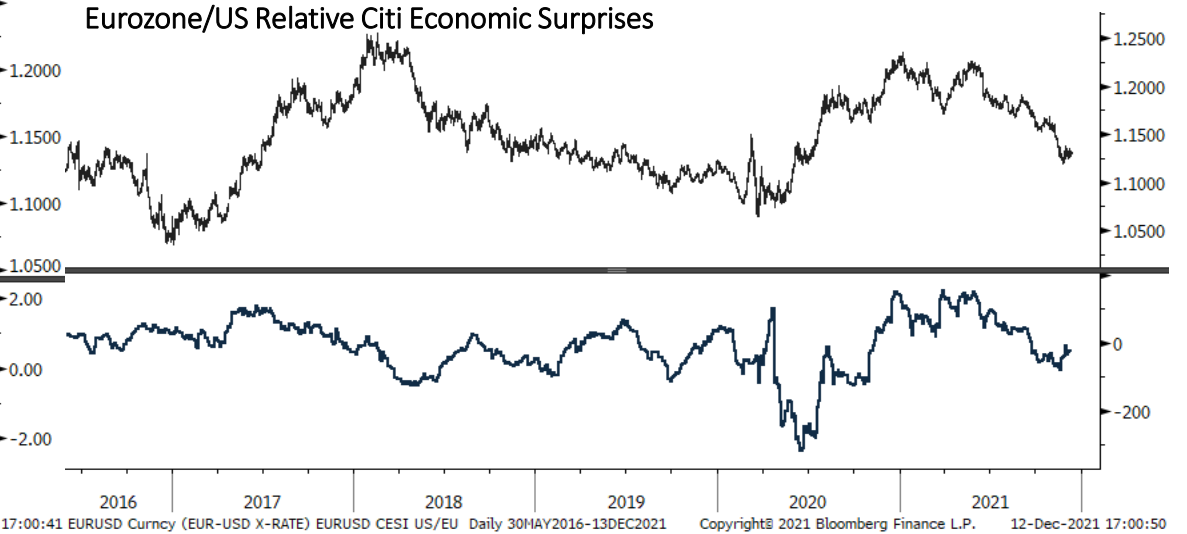
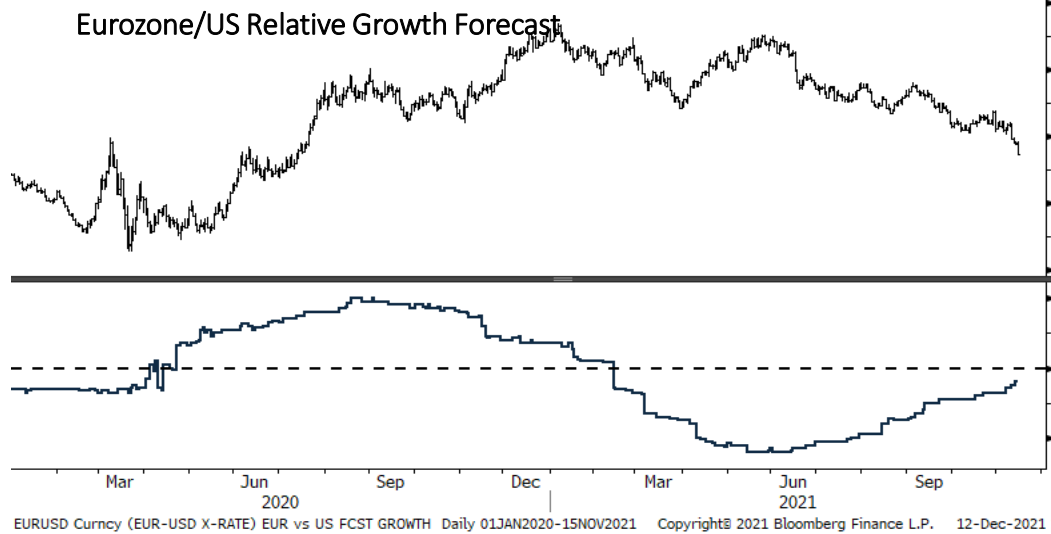
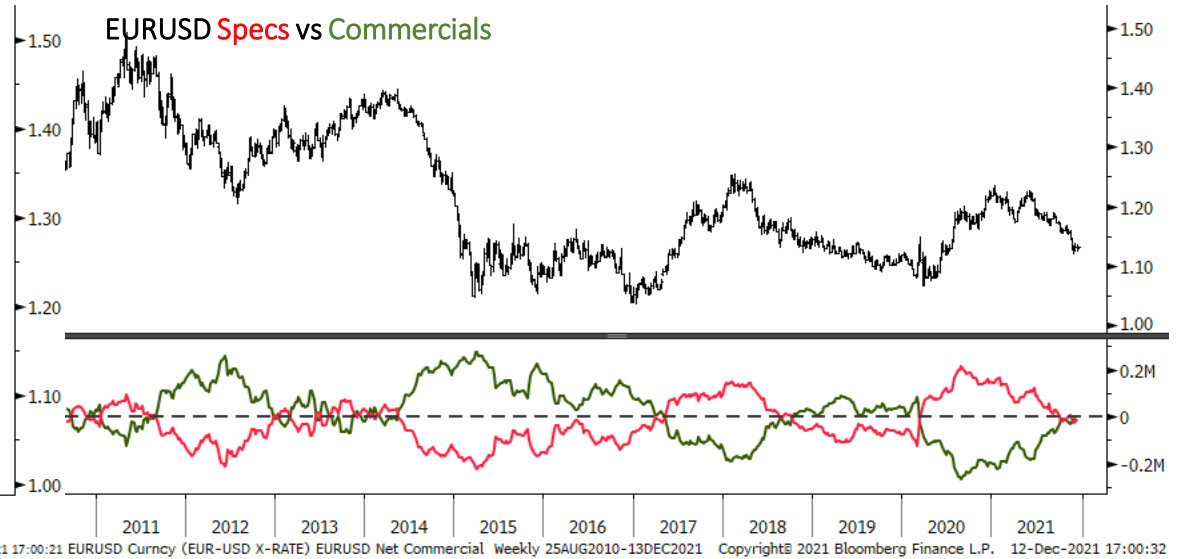
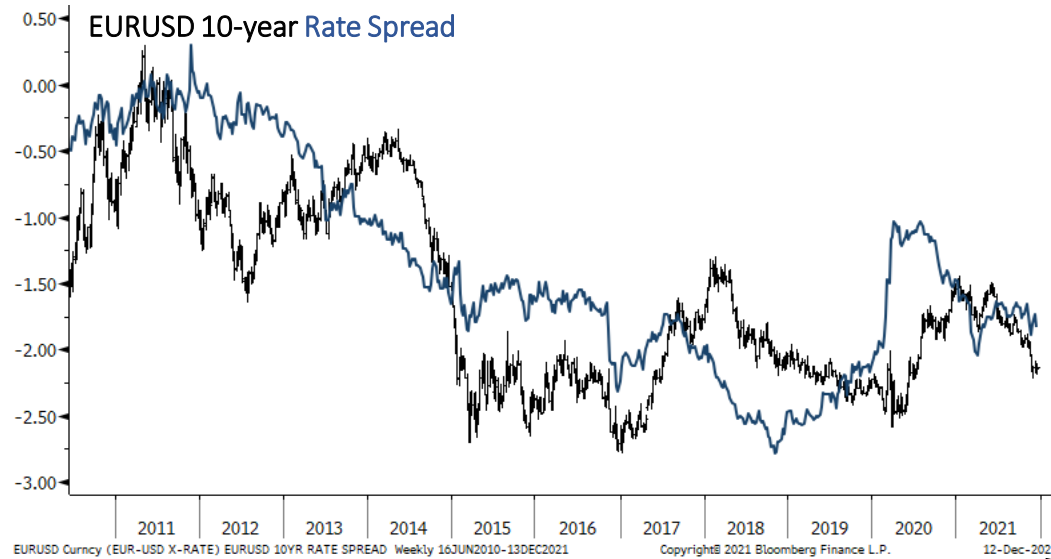
EURUSD Curncy (EUR-USD X-RATE) EURUSD - DAILY Daily 02APR2021-13DEC2021

Copyright© 2021 Bloomberg Finance L.P.

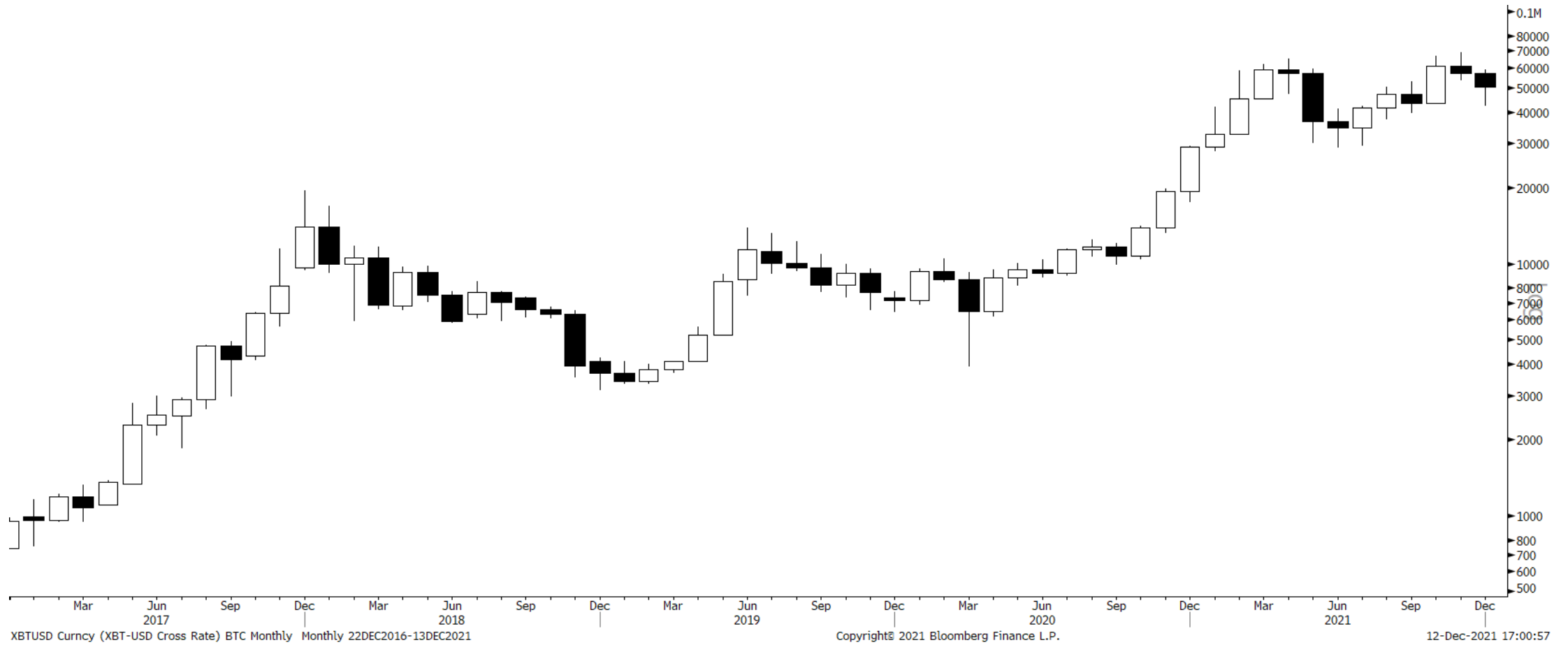
12-Dec-2021 17:00:13



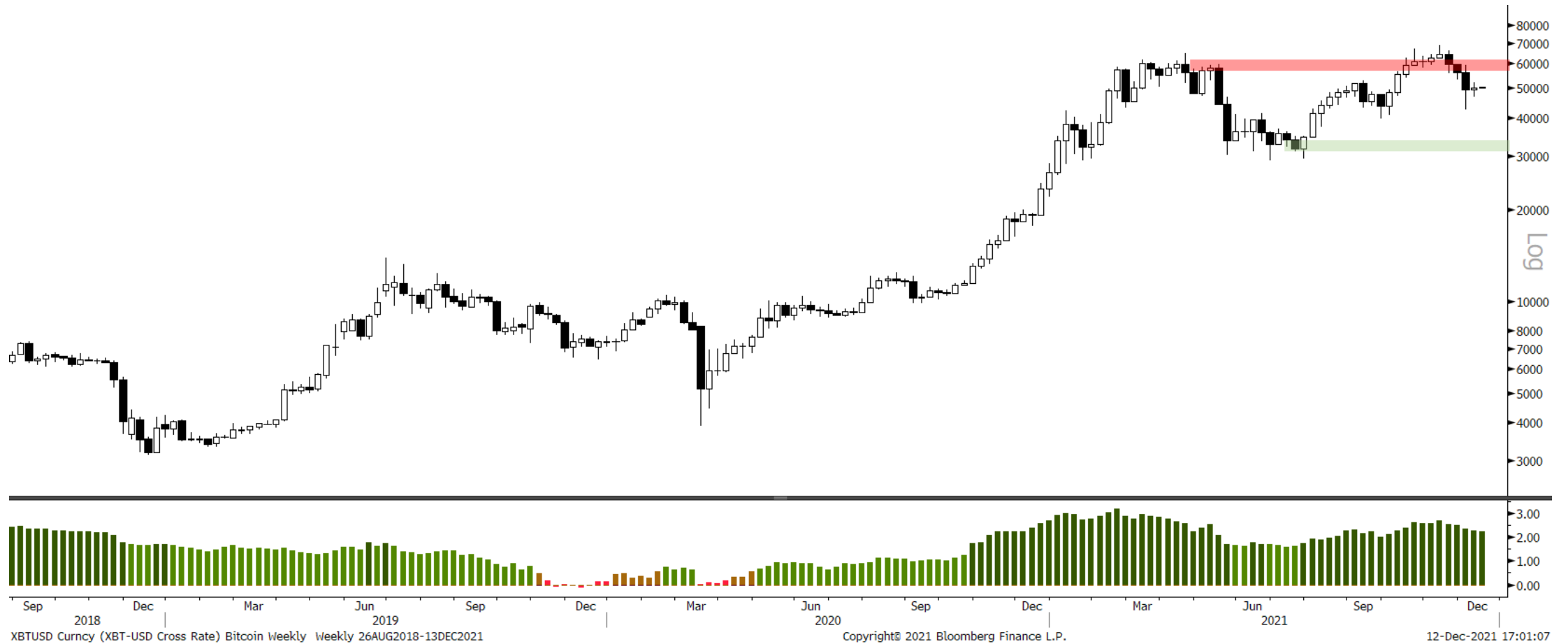
EURUSD Indicators



Bitcoin Monthly



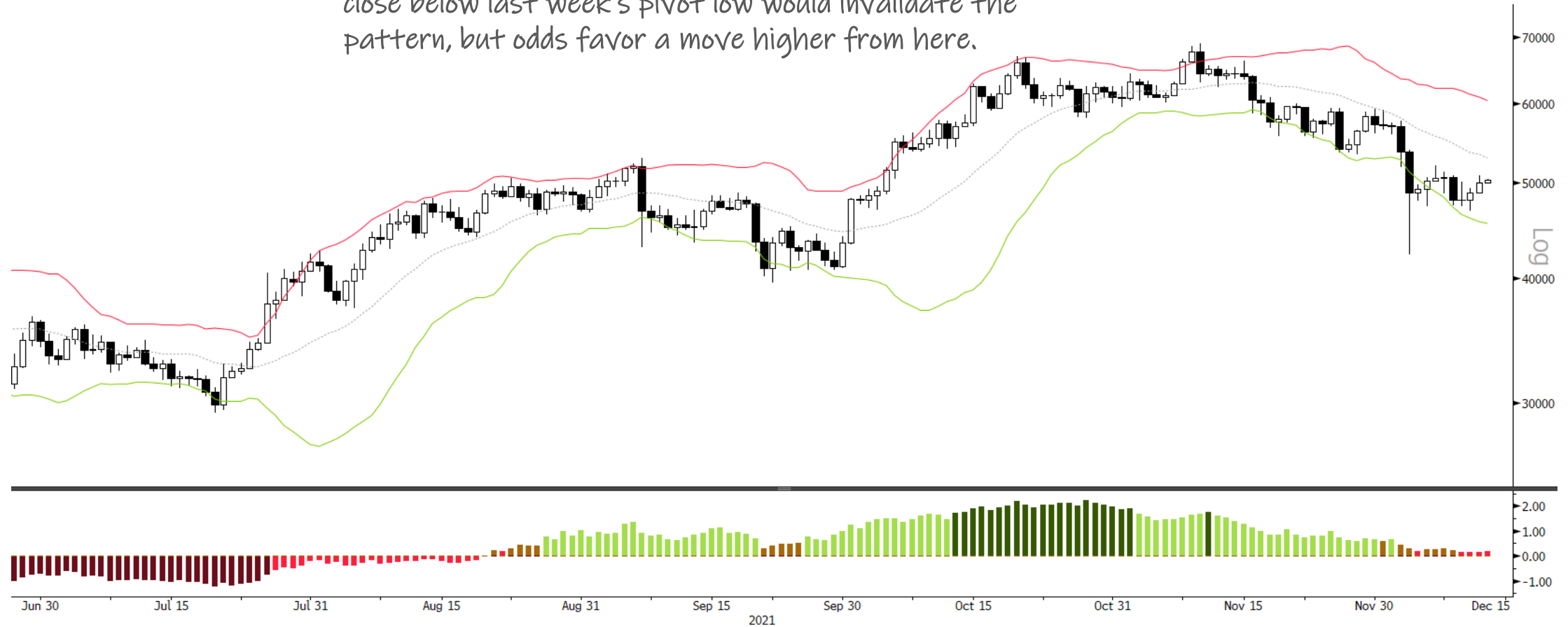
Bitcoin Weekly



Bitcoin Daily



A potential double complex bottom in BTCUSD is in. A close below last week's pivot low would invalidate the pattern, but odds favor a move higher from here.

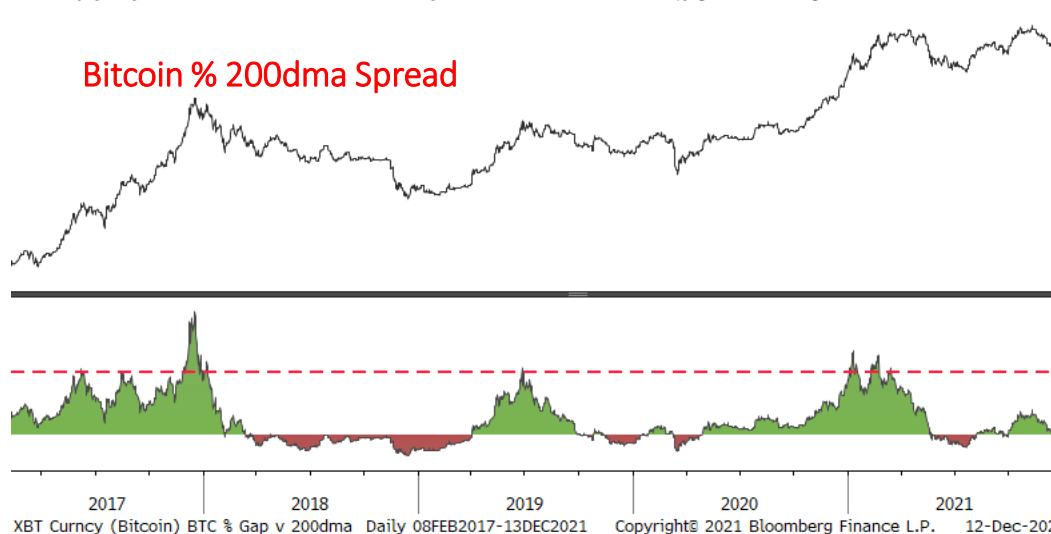
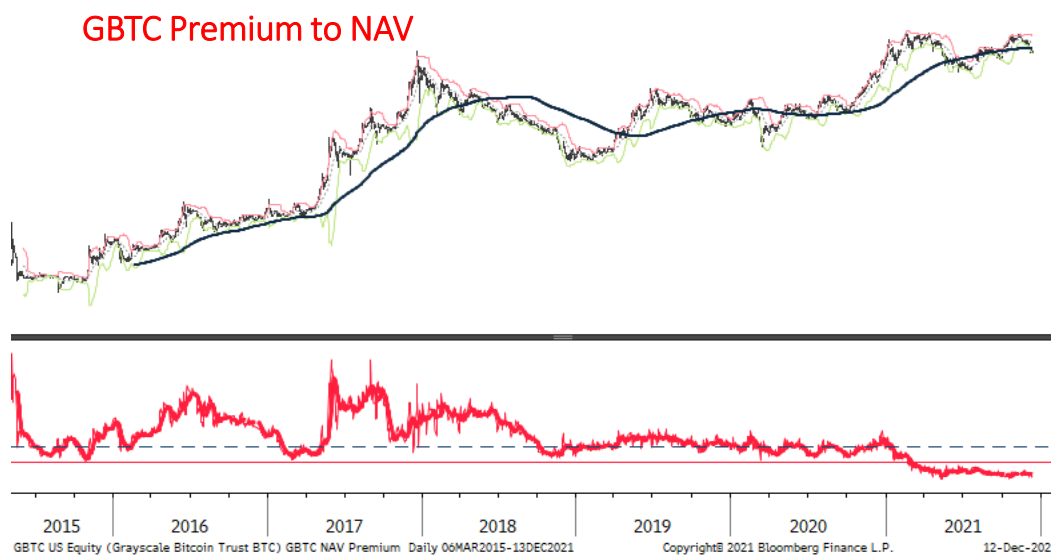


XBTUSD Curncy (XBT-USD Cross Rate) bitcoin Daily Daily 27JUN2021-13DEC2021

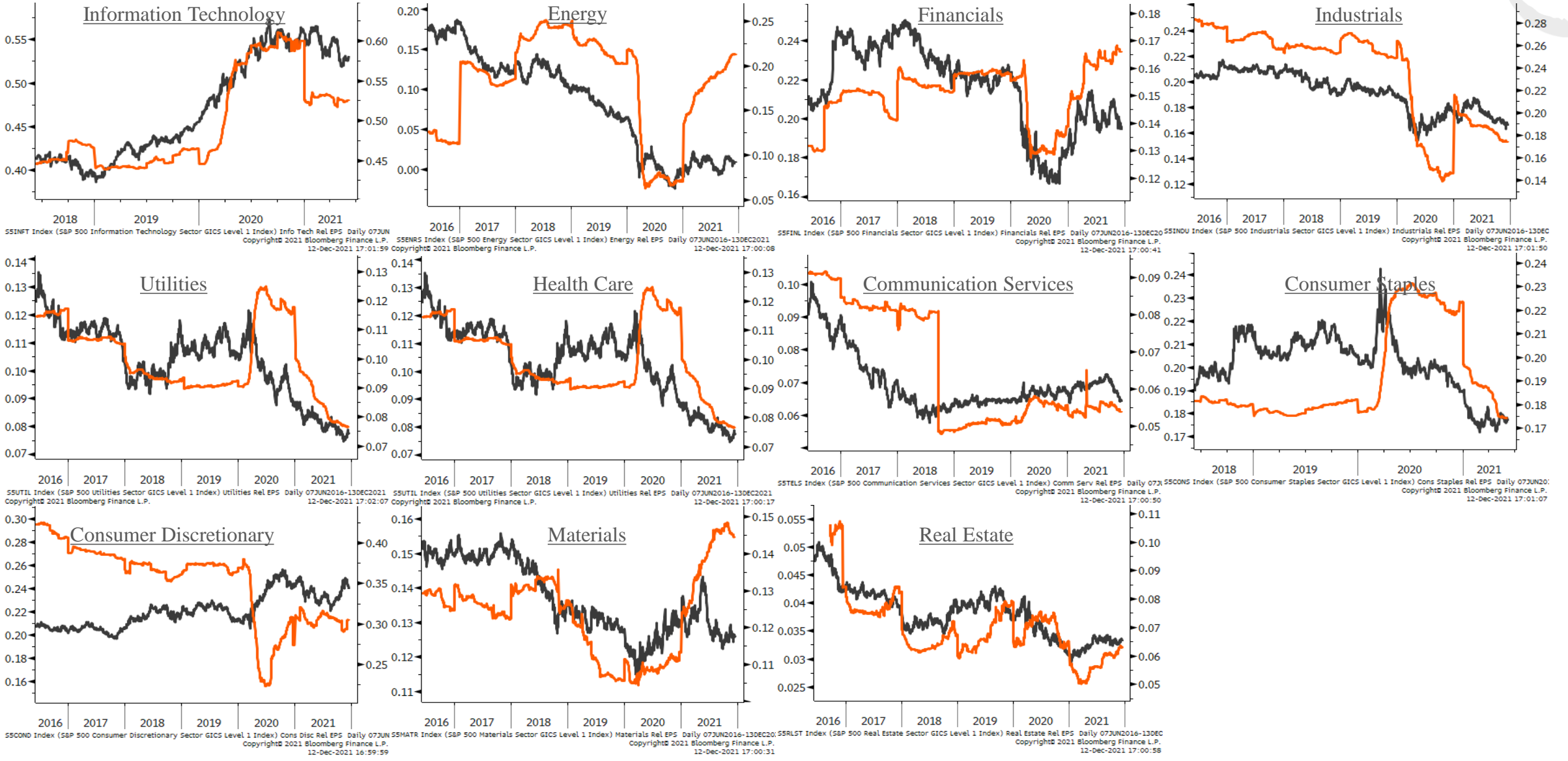
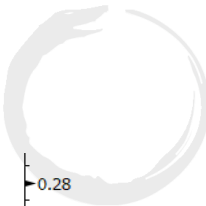
Copyright© 2021 Bloomberg Finance L.P.

12-Dec-2021 17:16:55

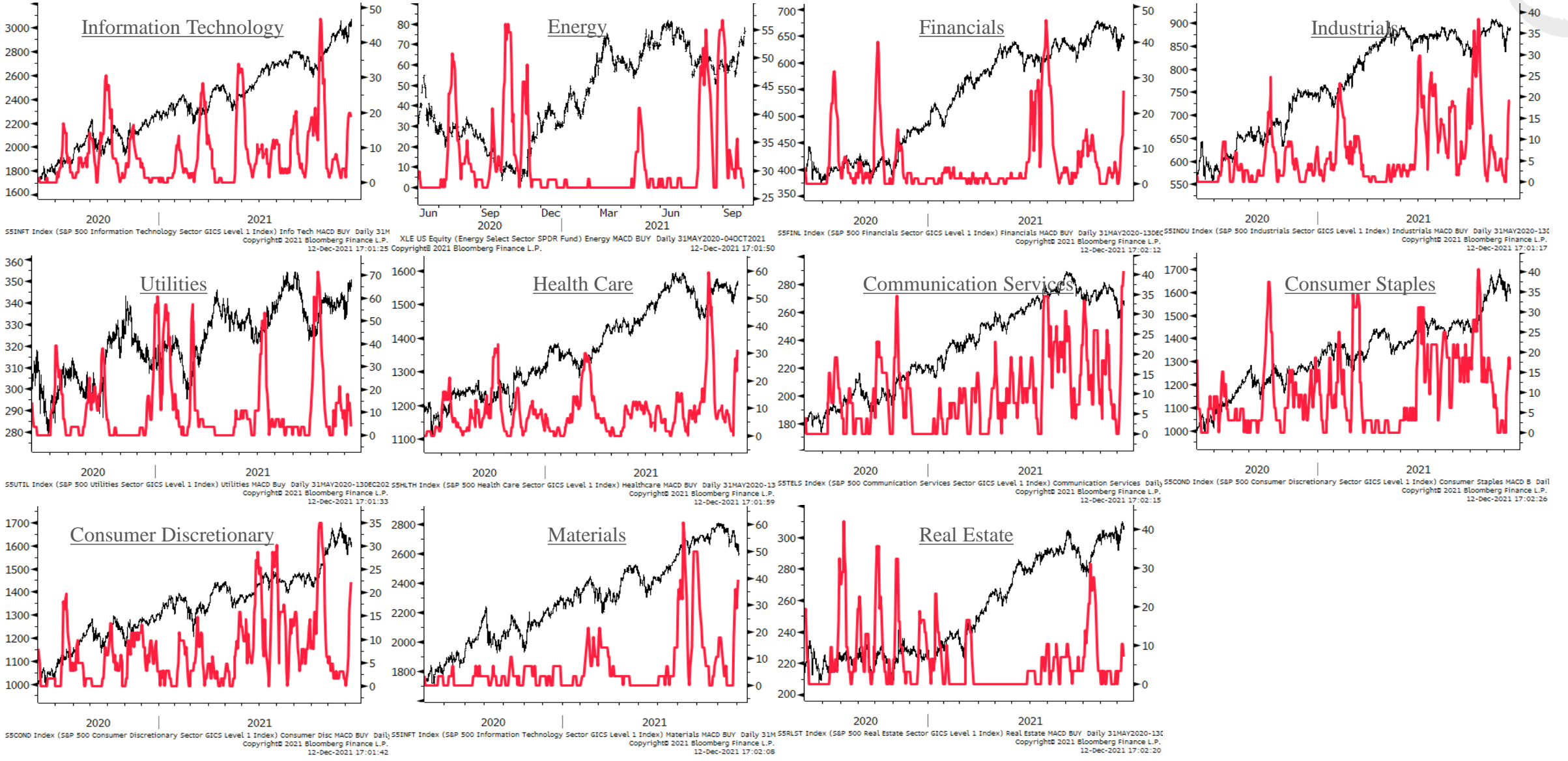
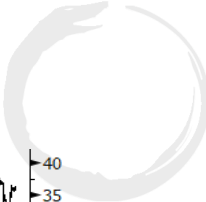
Bitcoin Indicators



Sector Relative to SPX Price & Forward EPS Performance (Price in Grey, F/EPS in Orange)



Sector % MACD Buy Signals



The Macro Ops Portfolio

PDF: <https://tinyurl.com/mo-portfolio>

2021 YTD Return **8.85%**
 2020 Final Return **66.40%**

Futures, Bonds & FX

	<u>Ticker</u>	<u>Contracts</u>	<u>Capital</u>	<u>Notional</u>	<u>Actual Risk</u>	<u>Cost Basis</u>	<u>Current Price</u>	<u>Stop-Loss</u>	<u>Current P&L</u>	<u>Total Notional</u>	<u>Total Risk</u>
USDMXN	USDMXN	15,819	\$330,933.48	21.34%	0.52%	\$20.51	\$20.92	\$20.00	1.98%		

Equities

Strategic

	<u>Ticker</u>	<u>Shares</u>	<u>Capital</u>	<u>Notional</u>	<u>Actual Risk</u>	<u>Cost Basis</u>	<u>Current Price</u>	<u>Stop-Loss</u>	<u>Current P&L</u>	<u>Total Notional</u>	<u>Total Risk</u>
Centrus Energy	LEU	900	\$52,183.87	3.36%	-1.11%	\$25.86	\$57.97	\$45.00	124.17%	15.93%	0.37%
Ammo, Inc	POWW	8,418	\$48,153.11	3.10%	0.00%	\$3.01	\$5.72	\$3.01	90.03%		
Desert Control	DSRT	15,705	\$64,547.19	4.16%	1.01%	\$4.11	\$4.11	\$3.11	0.00%		
Nintendo	NTDOY	383	\$22,767.88	1.47%	0.44%	\$67.92	\$59.40	\$50.00	-12.54%		
eDreams ODIGEO	EDR	3,292	\$28,147.02	1.81%	0.17%	\$8.32	\$8.55	\$7.50	2.76%		
Bioceres Crop Solutions	BIOX	2,195	\$31,346.83	2.02%	-0.15%	\$9.67	\$14.28	\$10.75	47.67%		

Tactical

	<u>Ticker</u>	<u>Shares</u>	<u>Capital</u>	<u>Notional</u>	<u>Actual Risk</u>	<u>Cost Basis</u>	<u>Current Price</u>	<u>Stop-Loss</u>	<u>Current P&L</u>	<u>Total Notional</u>	<u>Total Risk</u>
Corteva	CTVA	4,328	\$207,580.90	13.38%	0.88%	\$47.76	\$47.96	\$44.62	0.42%	50.56%	3.25%
Ferroglobe PLC	GSM	6,899	\$43,810.77	2.82%	0.52%	\$6.86	\$6.35	\$5.70	-7.43%		
Peabody Energy	BTU	6,352	\$59,452.55	3.83%	0.52%	\$10.26	\$9.36	\$9.00	-8.77%		
St. Joe's	JOE	1,445	\$72,464.69	4.67%	0.31%	\$48.31	\$50.15	\$45.00	3.80%		
Ethereum	ETHUSD	22	\$91,464.34	5.90%	-1.75%	\$2,667.94	\$4,157.47	\$3,901.00	55.83%		
Sprott Physical Uranium Trust	U.UN	5,597	\$64,646.27	4.17%	0.52%	\$11.56	\$11.55	\$10.13	-0.09%		
StoneCo.	STNE	2,042	\$36,098.88	2.33%	0.52%	\$17.90	\$17.68	\$13.98	-1.23%		
Paladin Energy	PDN.ASX	141,350	\$79,862.86	5.15%	0.91%	\$0.64	\$0.57	\$0.54	-11.72%		
Alphamin Resources	AFM.TSX	58,715	\$47,558.77	3.07%	0.49%	\$0.76	\$0.81	\$0.63	6.58%		
Intrepid Potash	IPI	743	\$31,374.78	2.02%	0.23%	\$40.15	\$42.24	\$35.33	5.21%		
Ethereum (Second Leg Long)	ETHUSD	12	\$49,889.64	3.22%	0.11%	\$4,047.66	\$4,157.47	\$3,901.00	2.71%		

Options

	<u>Ticker</u>	<u>Contracts</u>	<u>Capital</u>	<u>Notional</u>	<u>Actual Risk</u>	<u>Cost Basis</u>	<u>Current (Mid) Price</u>	<u>Stop-Loss</u>	<u>Current P&L</u>	<u>Total Notional</u>	<u>Total Risk</u>
CRK JAN 2023 \$10 CALLS	CRK	171	\$31,293.00	2.02%	1.32%	\$120.00	\$183.00	\$0.00	52.50%	6.11%	11.22%
ENB Jan 2023 \$50 CALLS	ENB	389	\$7,780.00	0.50%	0.88%	\$35.00	\$20.00	\$0.00	-42.86%		
Micron Jan 2023 \$125 CALLS	MU	82	\$37,720.00	2.43%	2.50%	\$473.00	\$460.00	\$0.00	-2.75%		
MO JAN 2023 \$70 CALLS	MO	299	\$8,372.00	0.54%	1.77%	\$92.00	\$28.00	\$0.00	-69.57%		
EWJ JAN 2023 \$90 CALLS	EWJ	173	\$6,055.00	0.39%	1.36%	\$122.00	\$35.00	\$0.00	-71.31%		
FB JAN 2022 \$395 CALLS	FB	7	\$560.00	0.04%	0.40%	\$880.00	\$80.00	\$0.00	-90.91%		
BHP Jan 2023 \$115 CALLS	BHP	55	\$2,750.00	0.18%	1.35%	\$380.00	\$50.00	\$0.00	-86.84%		
Intel, Inc. JAN '22 \$100 CALLS	INTC	220	\$110.00	0.01%	1.18%	\$83.00	\$0.50	\$0.00	-99.40%		
Deutsche Bank Jan 2022 \$20 CALLS	DB	233	\$116.50	0.01%	0.47%	\$31.00	\$0.50	\$0.00	-98.39%		

Appendix

- Trifecta Lens & SQN Methodology & Case Study ([link here](#))
 - TL Score Theory ([link here](#))
 - SQN Market Regimes Theory ([link here](#))
 - TL & SQN Dashboard ([link here](#))
 - Trend Fragility Dashboard ([link here](#))
- Nervous & Numb Case Study (coming soon)
- Volatility & Failed Volatility Breakouts (VBO/FVBO) ([link here](#))
- Hierarchy of Technicals ([link here](#))
- Currency Framework ([link here](#))
- Precious Metals Framework ([link here](#))
- How to Read Market Sentiment ([link here](#))
- Equity Supply & Demand Equation ([link here](#))
- 50 Cent Conditional Tail Hedge Strategy ([link here](#))

