



# Macro Ops

## Swing Trade Setups

*See the signal, like the signal, follow the signal...* ~ Commodities Corp Saying



# Summary:

Chop wood and carry water is our mantra when it comes to executing on our futures swing trading strategy. We're staying primarily focused on Ags. Looking for long set ups and sticking to markets in Bull Quiet regimes that show repeated sell setup failures within a strong uptrend.

The key with this strategy is patience and waiting for the market to come to you. Setting buy and sell stops to let the market pull you into a trade. Placing these buy/sell stops at meaningful technical inflection points (ie, at the bottom of a sideways neutral regime or right above a breakout level above resistance, etc...)

We are now basically long the entire Ag complex. So... we'll be playing our stops tight in order to keep our open risk down.



# Current Positions and Active Setups

## • Current Positions:

- Long WTI Oil
- Long Wheat
- Long Sugar
- Long Corn
- Long Cotton
- Long DXY
- Long Natural Gas (5-day MA trail stop for half profits)
- Short DAX minis

## • Active Setups/On Watch:

- Add to Oil CLZ23 on breakout
- Buy Stop on Soybean Oil right above Monday's high
- BTCUSD on range breakdown watch

# Sugar #11



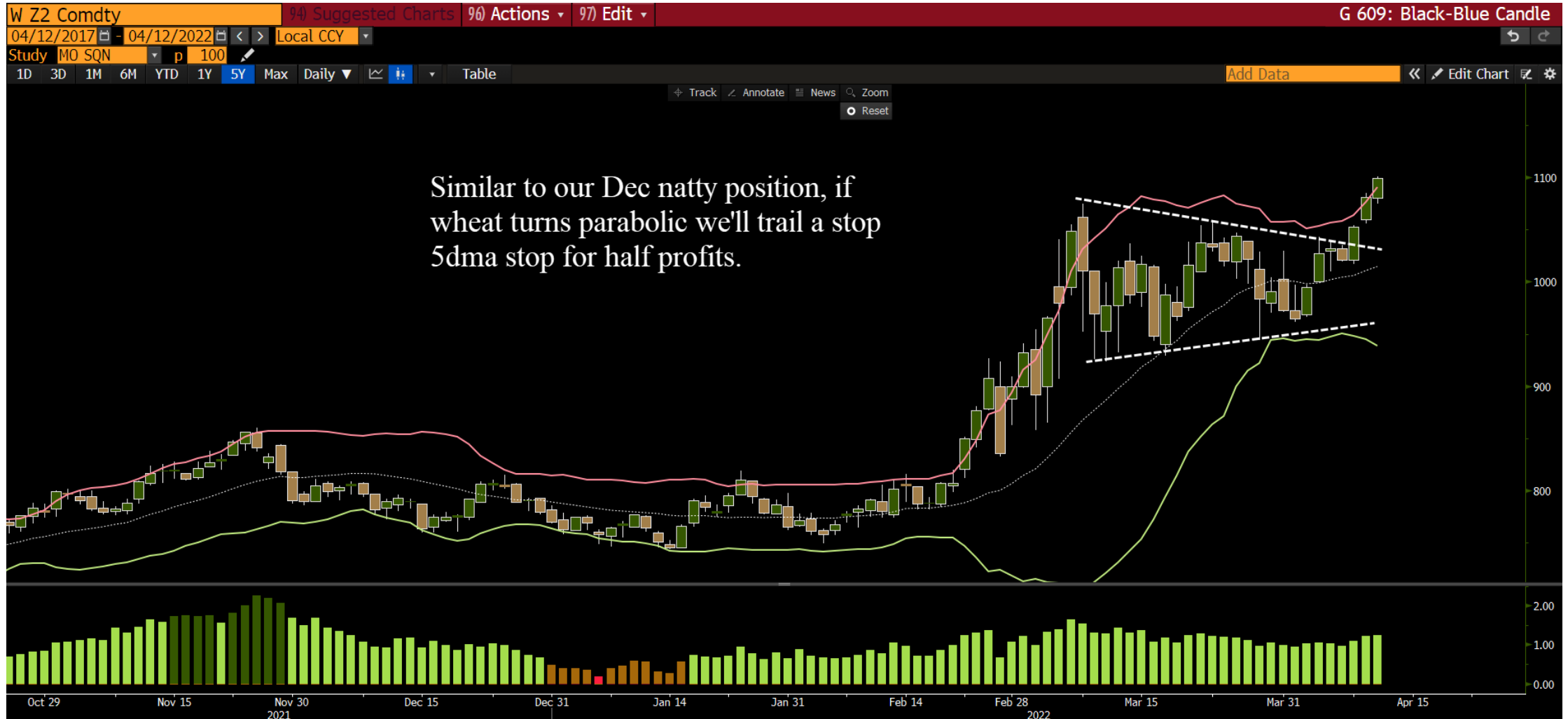
# WTI Dec 23'



# Natty Dec 22'



# Wheat Dec 22'

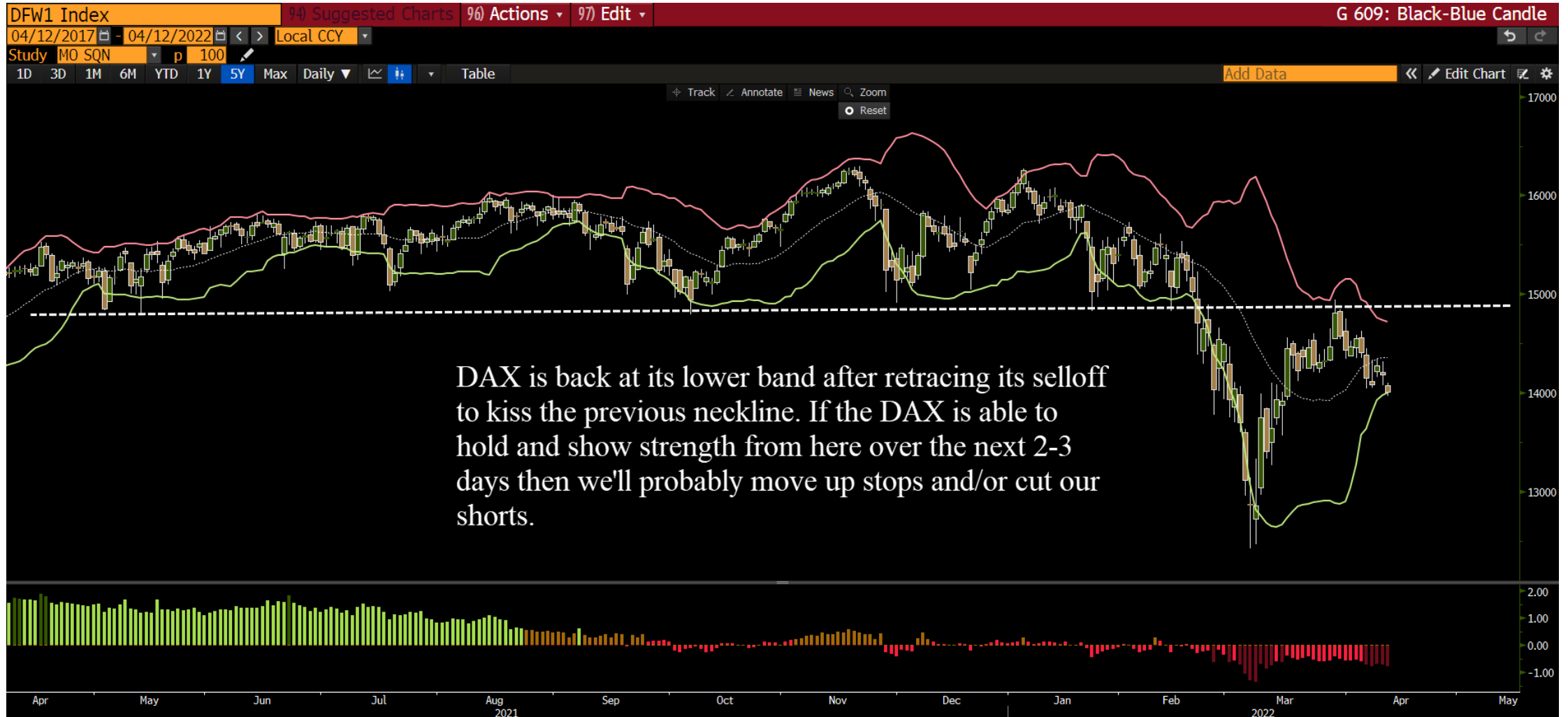


# DXY

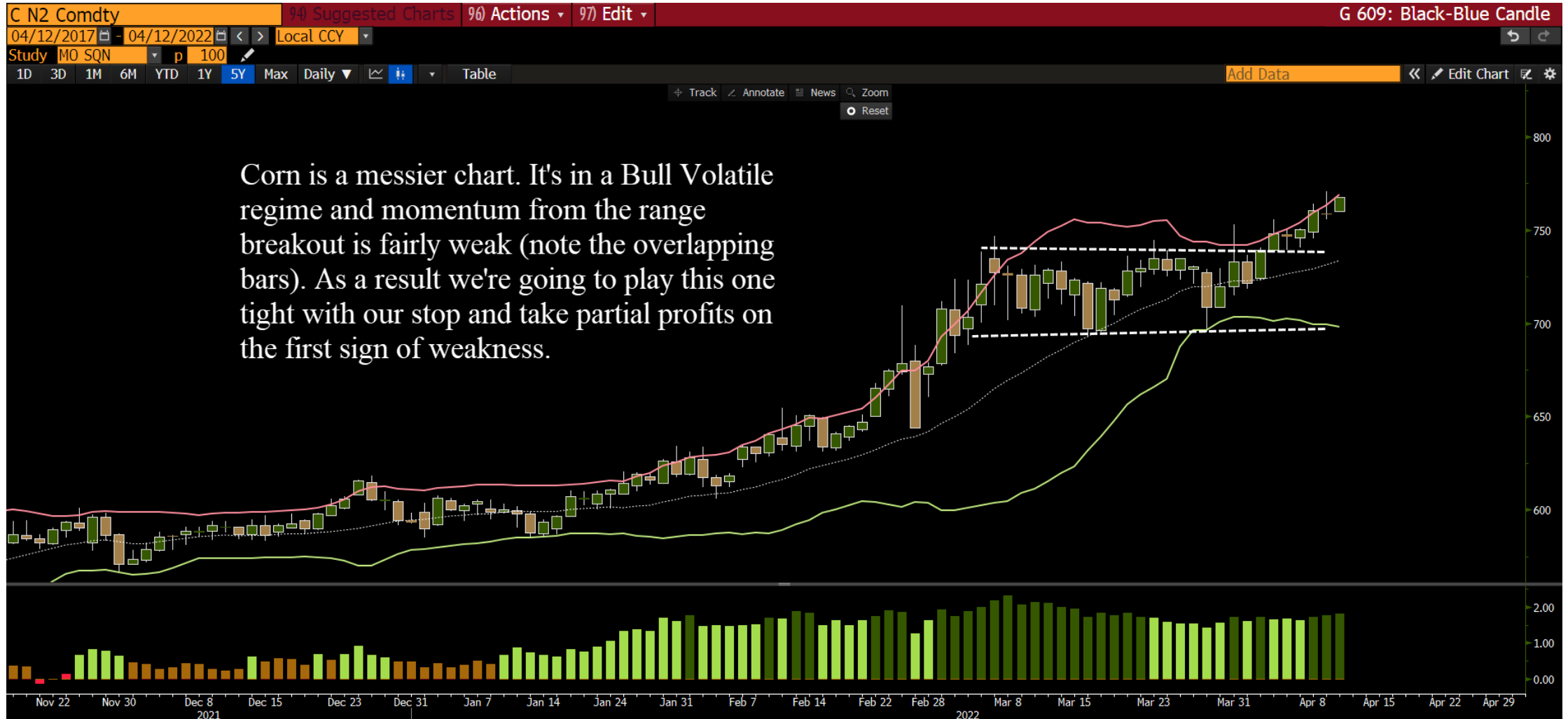




# DAX



# Corn July 22'



# Cotton July 22'



# Soybean Oil



# BTCUSD



# Appendix

- Trifecta Lens & SQN Methodology & Case Study ([link here](#))
  - TL Score Theory ([link here](#))
  - TL & SQN Dashboard ([link here](#))
  - Trend Fragility Dashboard ([link here](#))
- Nervous & Numb Case Study (coming soon)
- Volatility & Failed Volatility Breakouts (VBO/FVBO) ([link here](#))
- Hierarchy of Technicals ([link here](#))
- Currency Framework ([link here](#))
- Precious Metals Framework ([link here](#))
- How to Read Market Sentiment ([link here](#))
- Equity Supply & Demand Equation ([link here](#))
- 50 Cent Conditional Tail Hedge Strategy ([link here](#))

